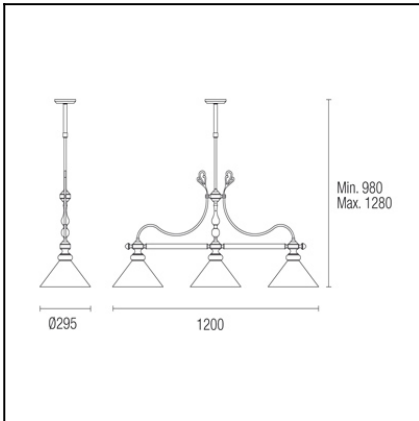




The photograph may not match the reference exactly. Please read the product description to identify the finish.



Download photometric file .ldt / .ies

TECHNICAL CHARACTERISTICS

| | |
|------------------------------|------------------|
| Type: | Pendant |
| IP Protection degrees: | IP20 |
| Lampholder: | 3 x E27 |
| Power (W): | E27 MAX 60W |
| Total power consumption (W): | 180 |
| Voltage / Frequency: | 220-240V/50-60Hz |
| Units per box: | 1 |
| Net Weight (Kg): | 6.11 |
| EAN: | 8435111007686 |



MATERIALS / FINISHES

Structure material: Steel
Structure finish: Patine

Diffuser material: Glass
Diffuser finish: Green

Hmax=1280
Hmin=980

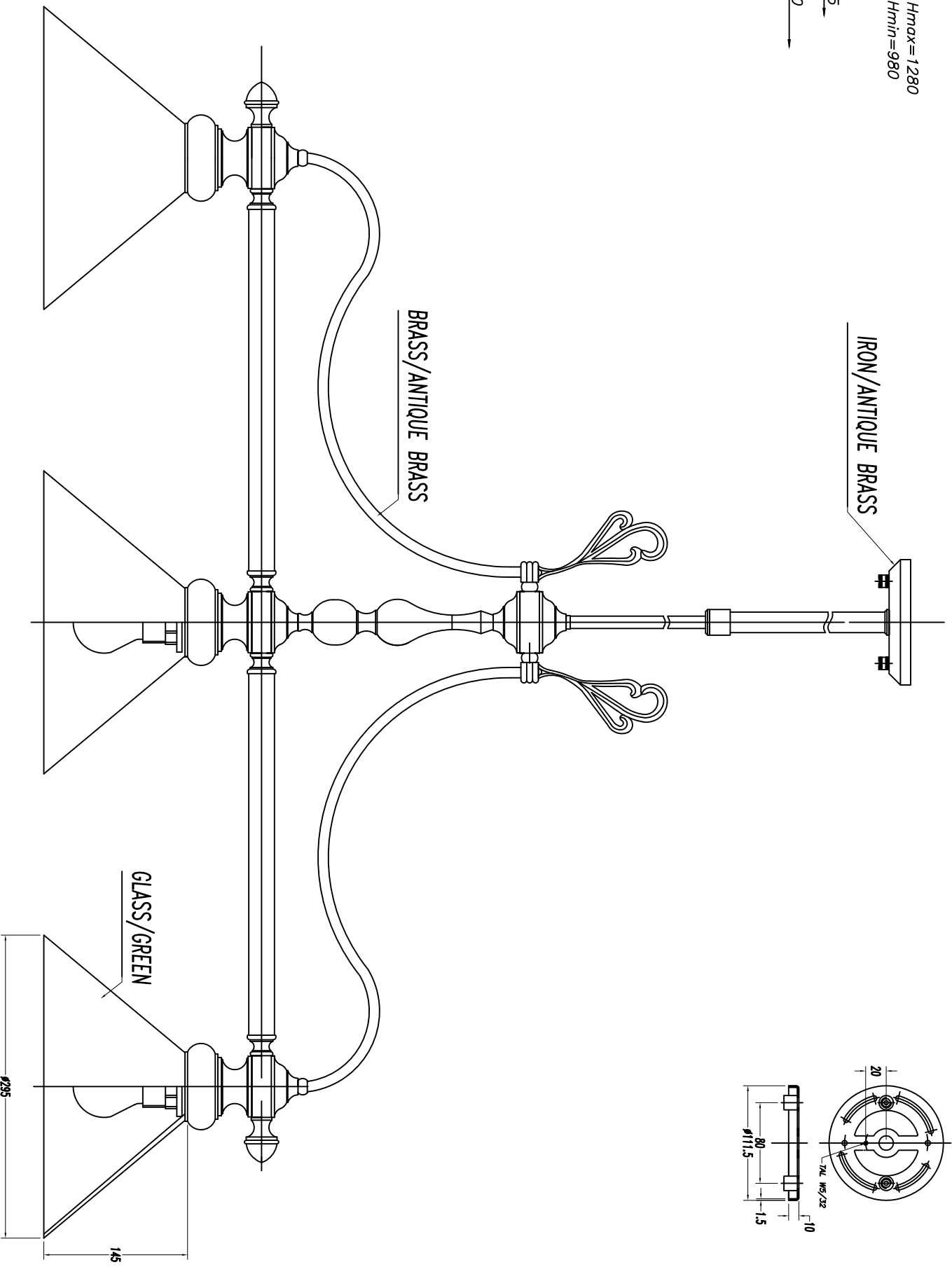
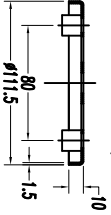
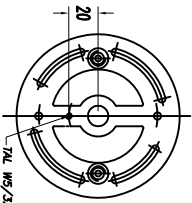
295

1200

IRON/ANTIQUÉ BRASS

BRASS/ANTIQUÉ BRASS

GLASS/GREEN



JAN-02-2012

DESCATALOGAT