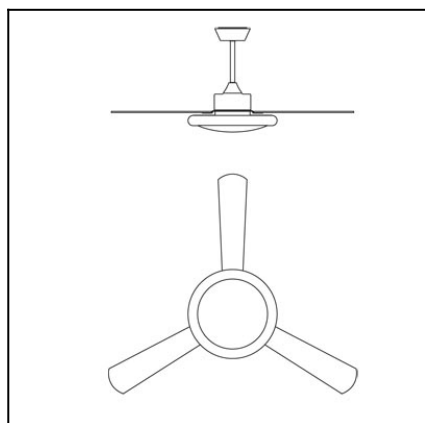


Design by Benedito Design



The photograph may not match the reference exactly. Please read the product description to identify the finish.



TECHNICAL CHARACTERISTICS

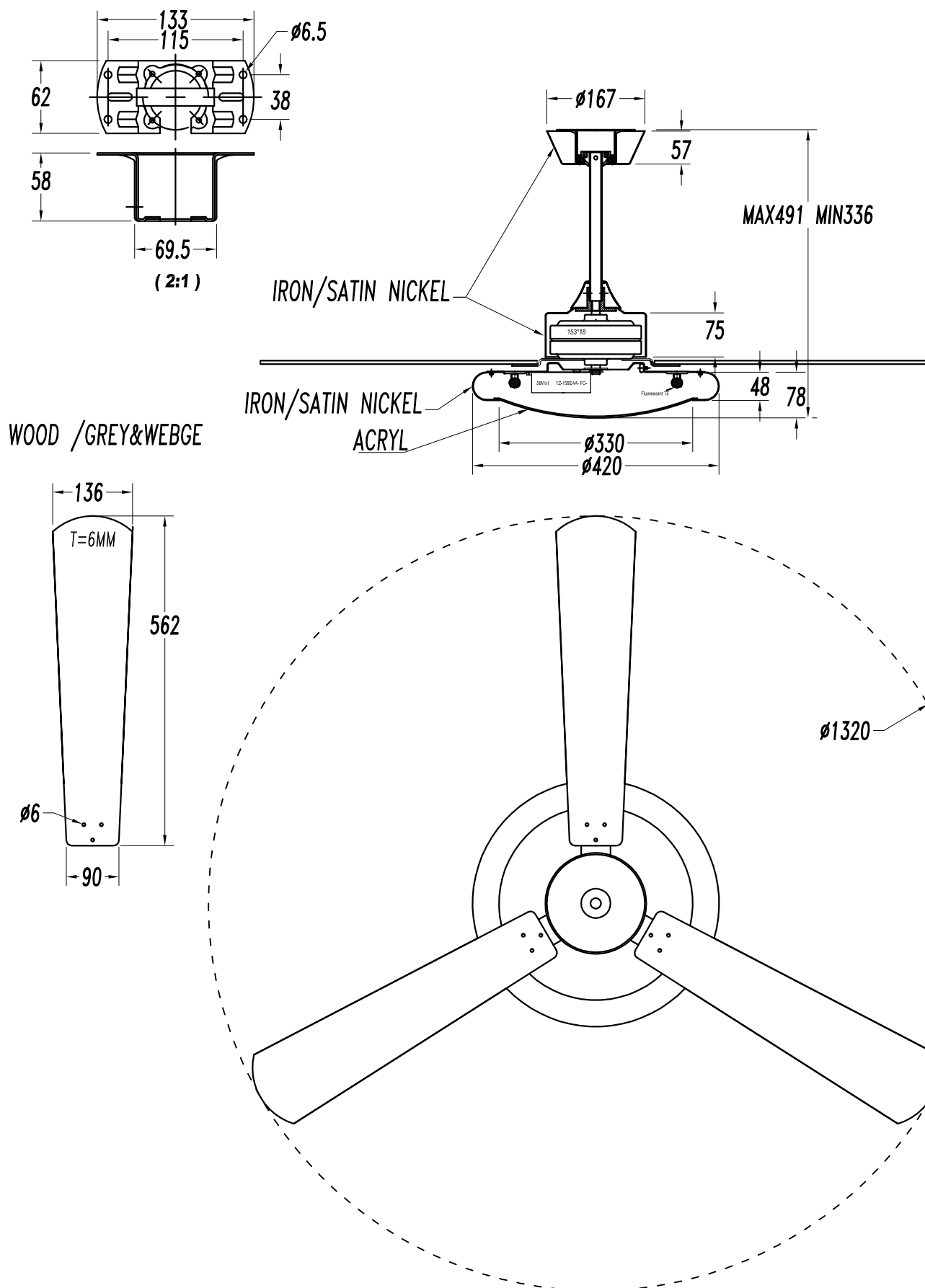
Type:	Fan
RPM:	81/143/193
IP Protection degrees:	IP20
Lampholder:	1 x 2GX13
Power (W):	2GX13 55W
Voltage / Frequency:	230V/50Hz
Units per box:	1
Net Weight (Kg):	8.045
EAN:	8435111076910



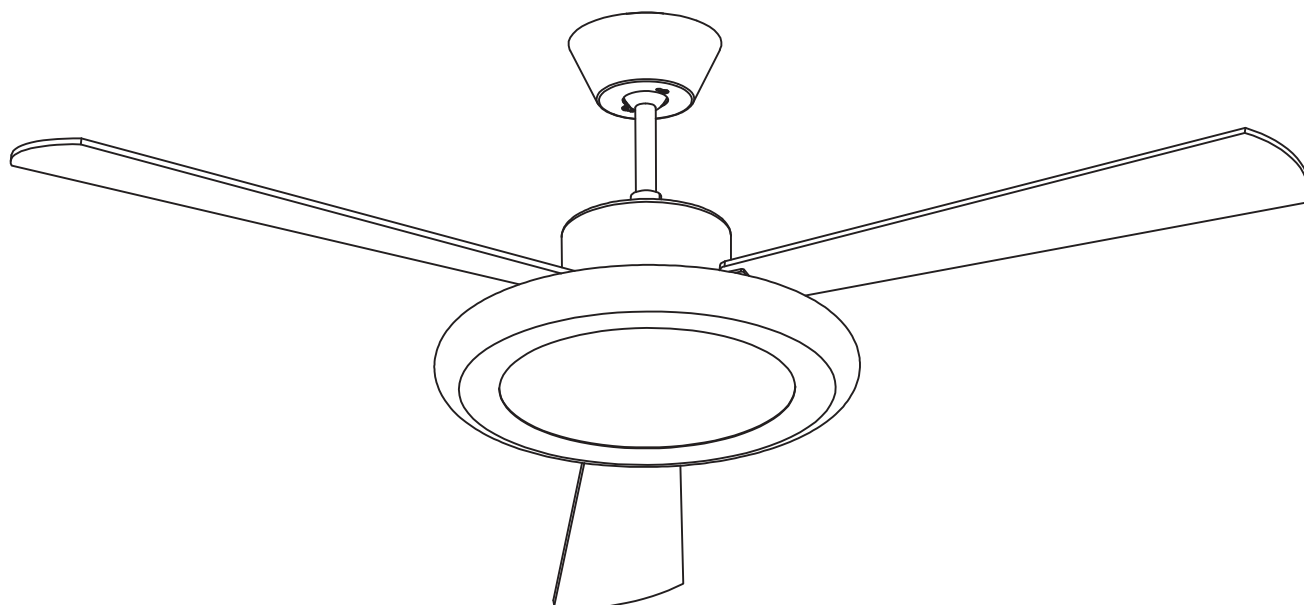
MATERIALS / FINISHES

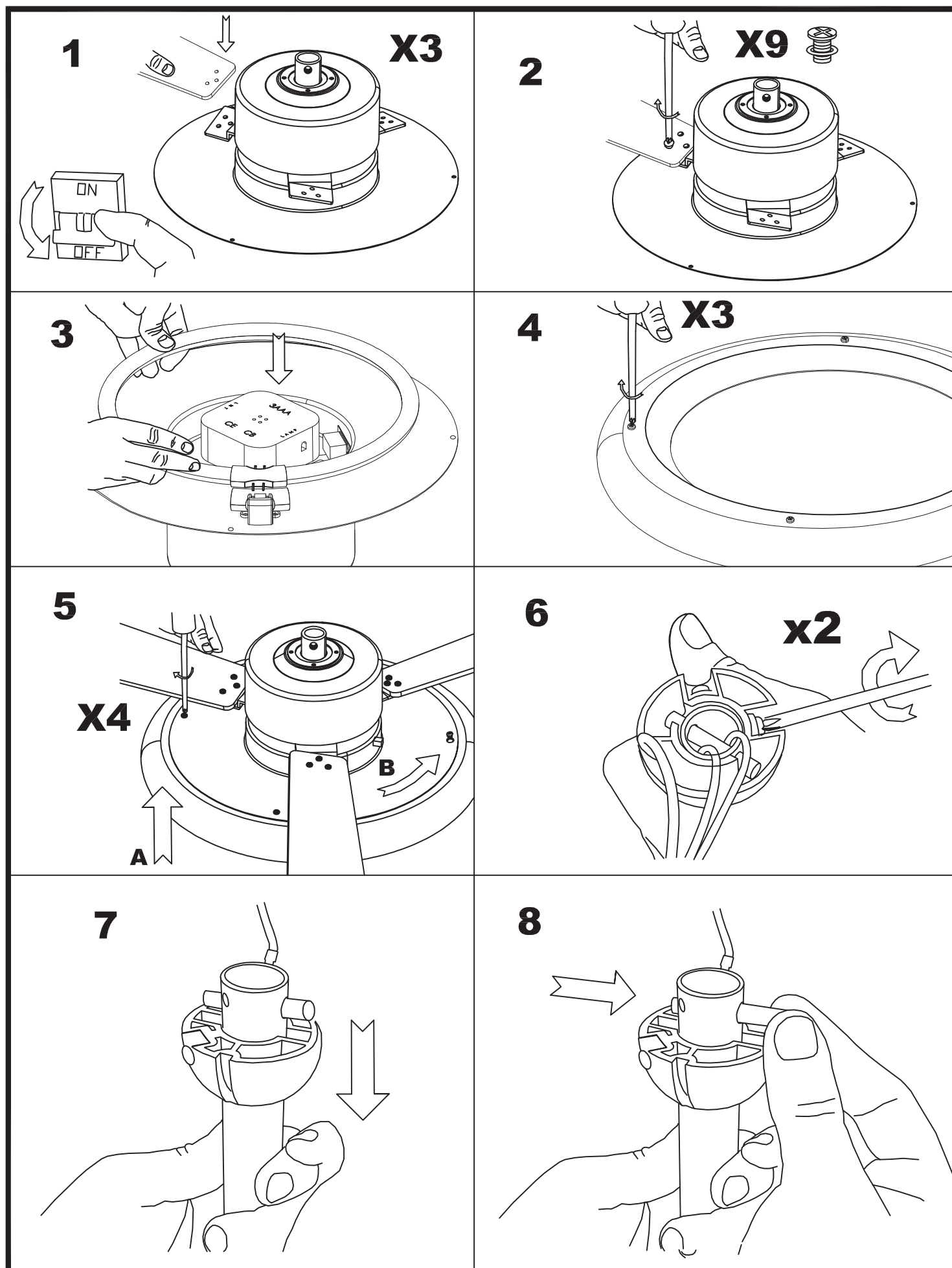
Structure material:	Steel	Diffuser material:	Acrylic
Structure finish:	Satin nickel	Diffuser finish:	Matt opal
Blades material:	Plywood		
Blades finishes:	Textured grey Wenge-painted finish		

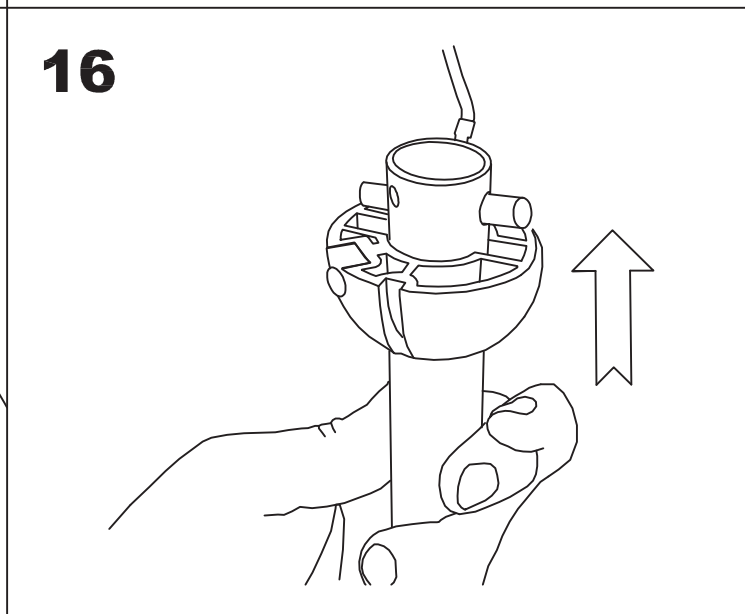
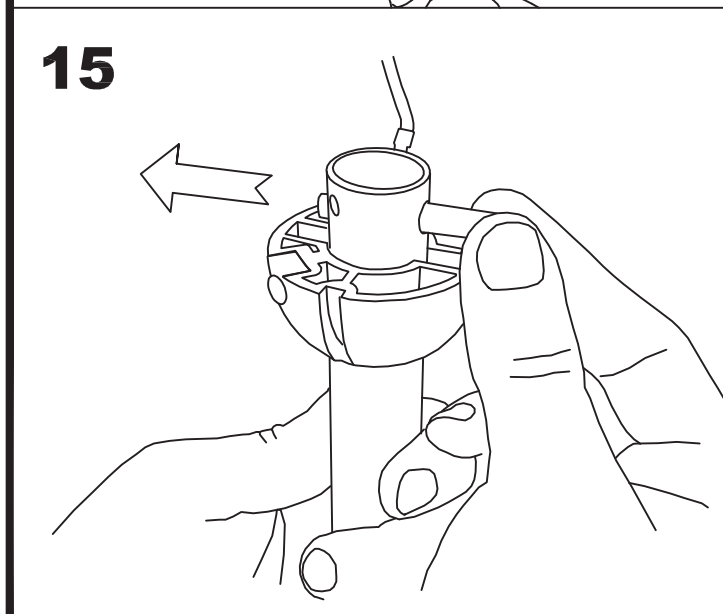
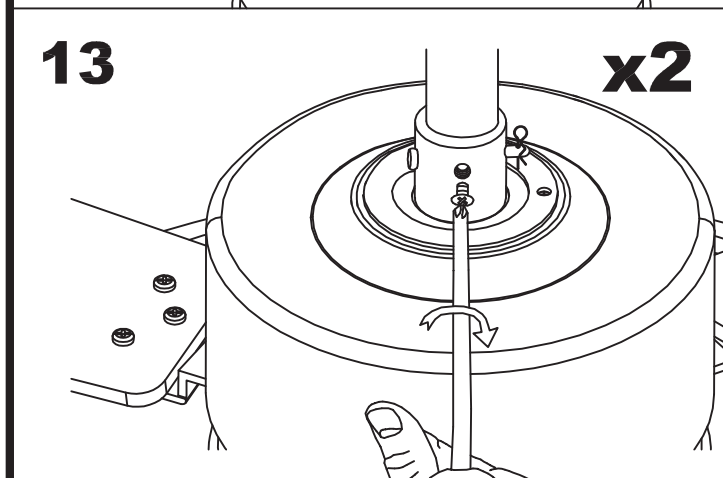
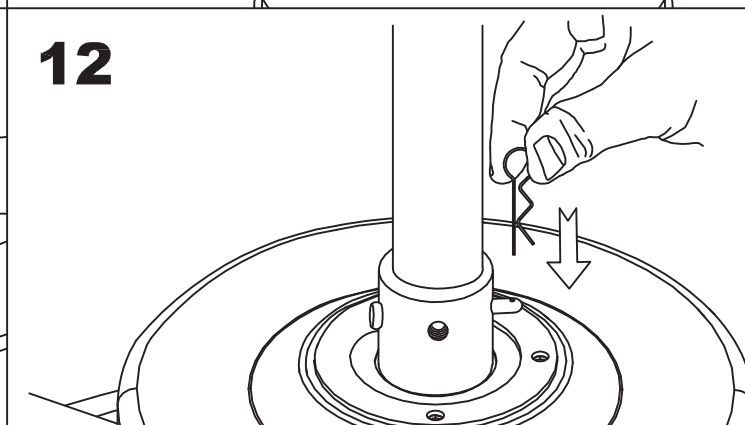
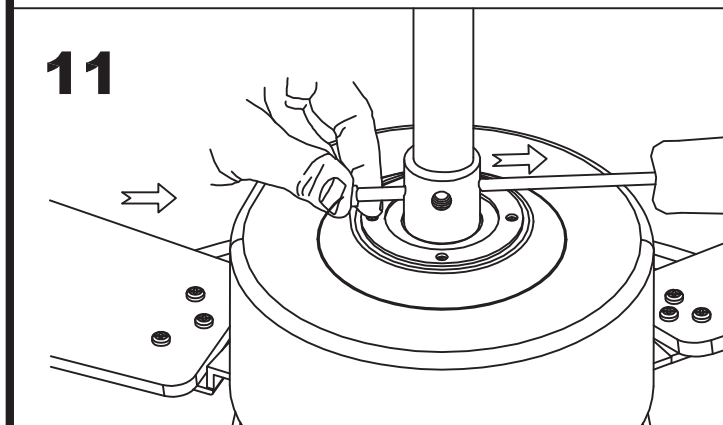
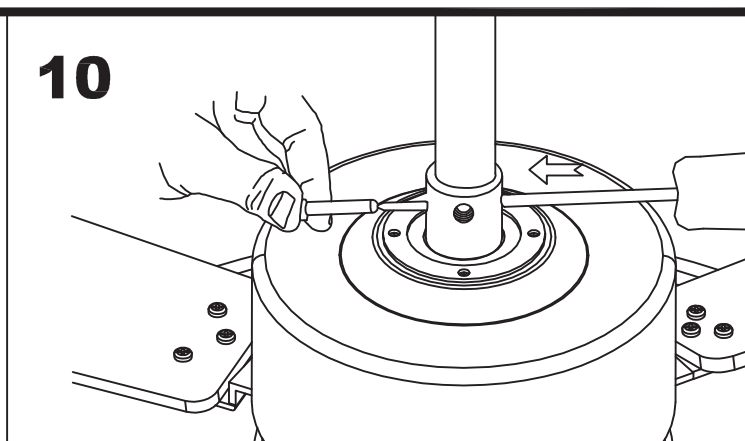
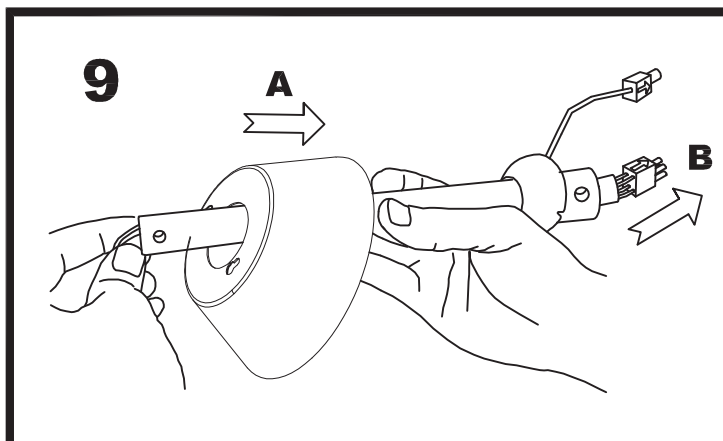
Download photometric file .ldt /.ies

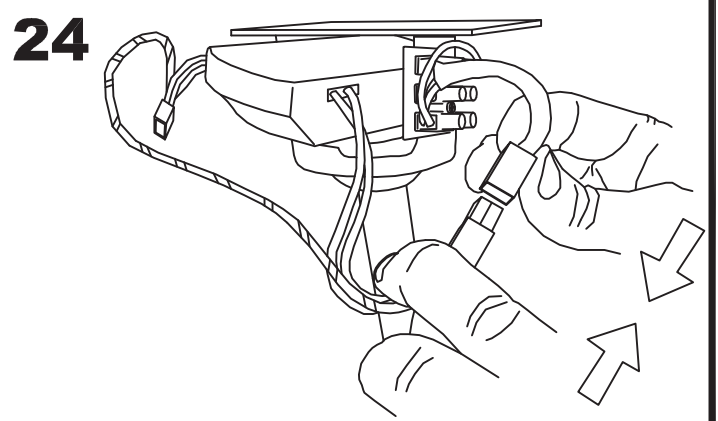
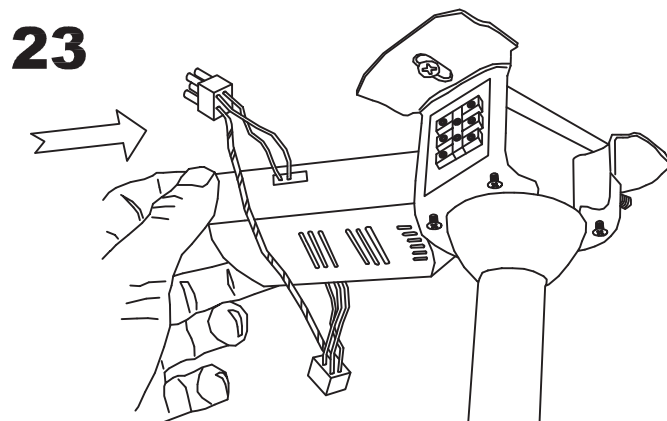
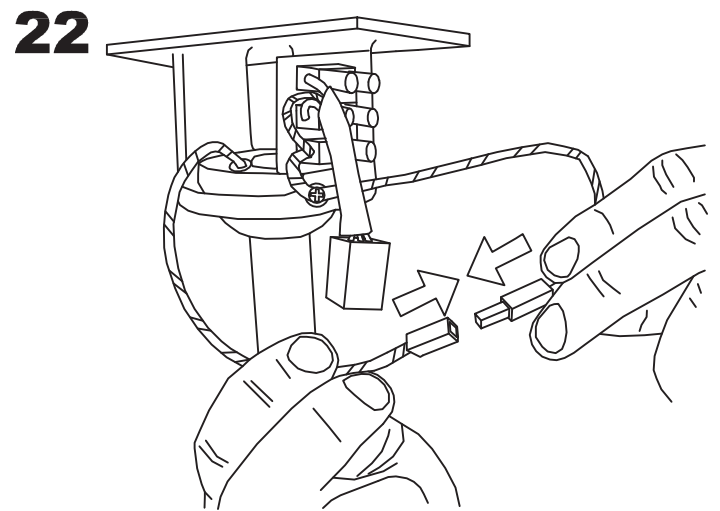
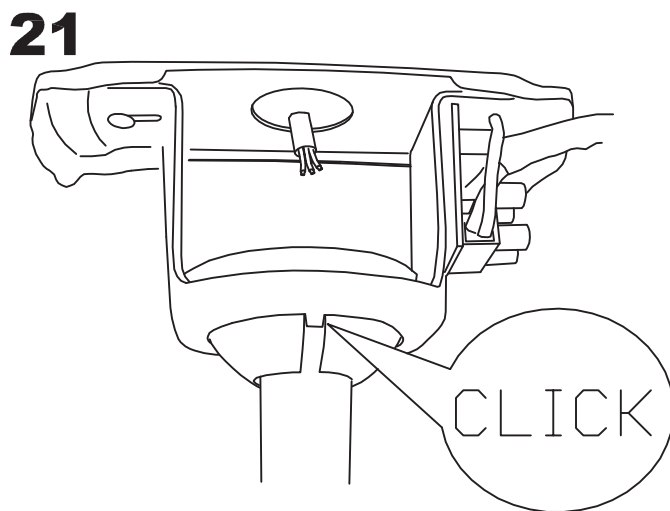
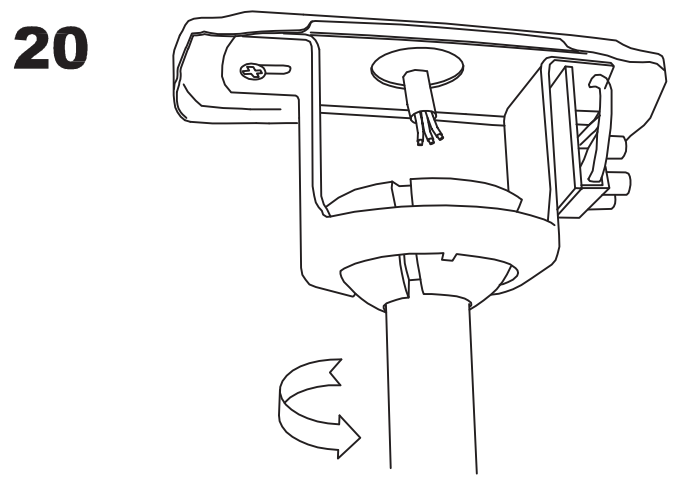
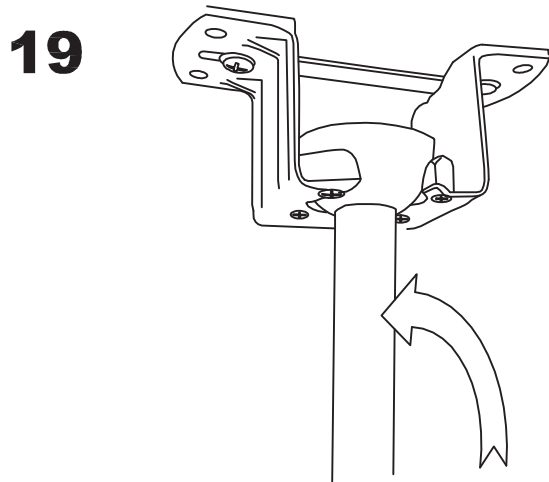
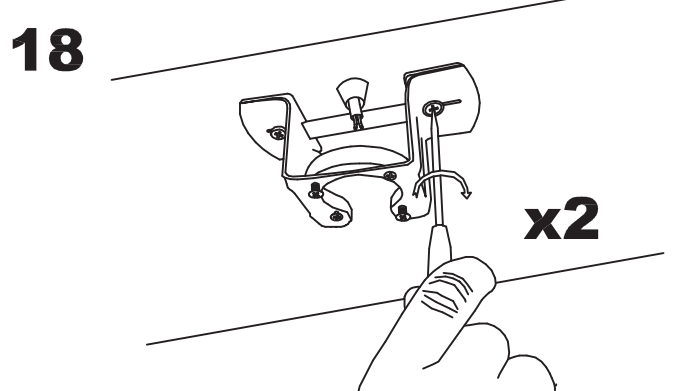
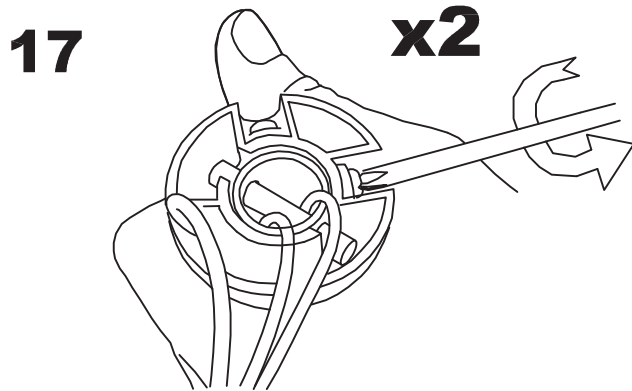


30-4355-81-M1

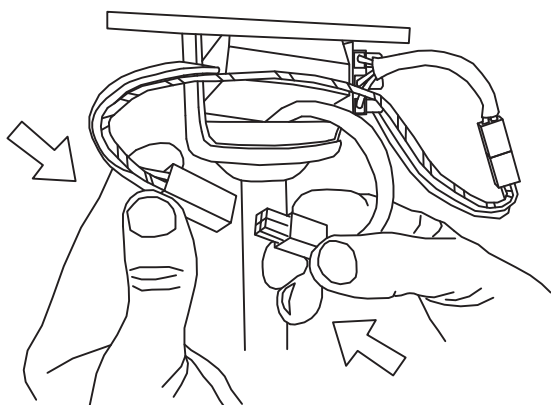




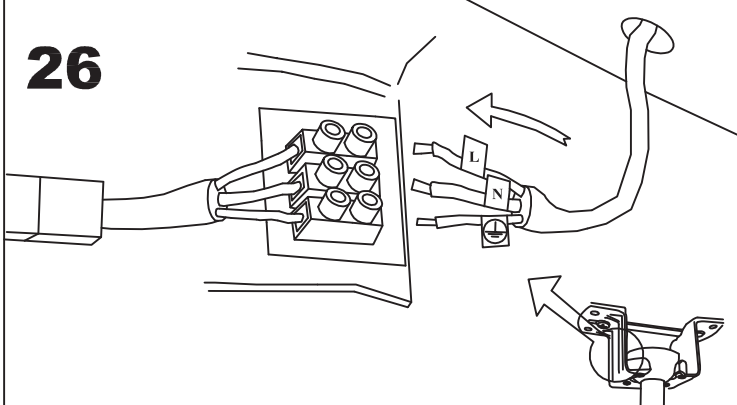




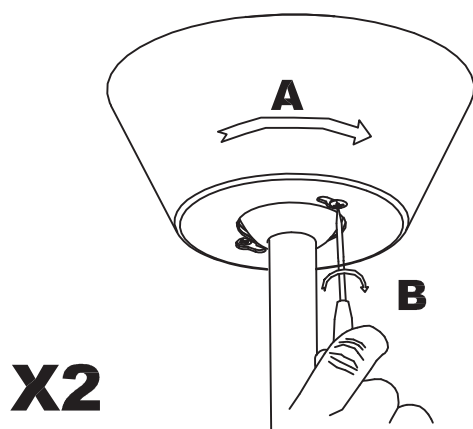
25



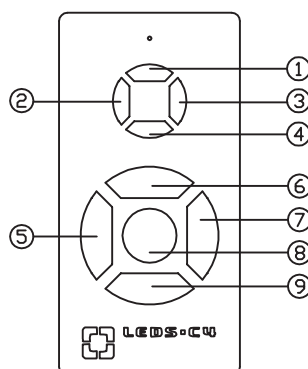
26



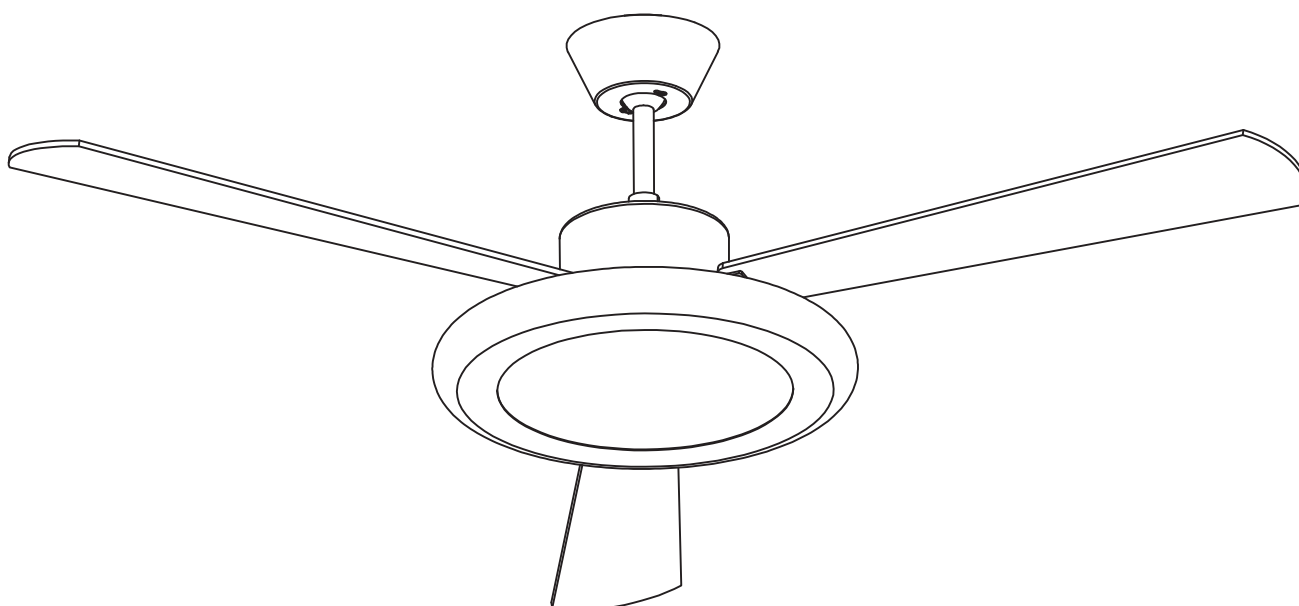
27

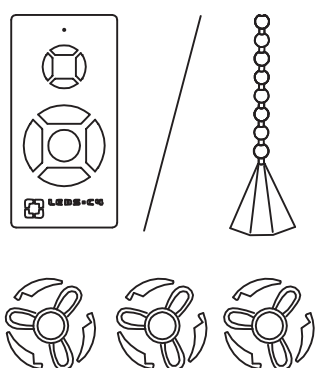
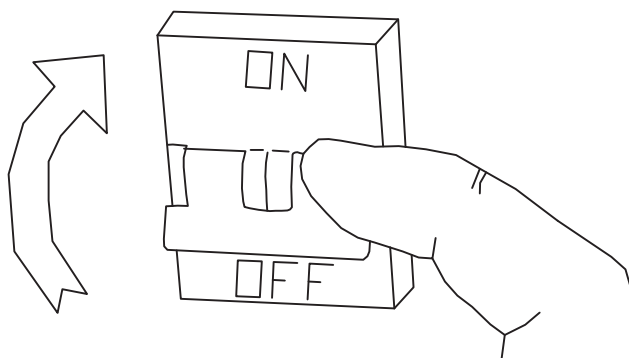


28

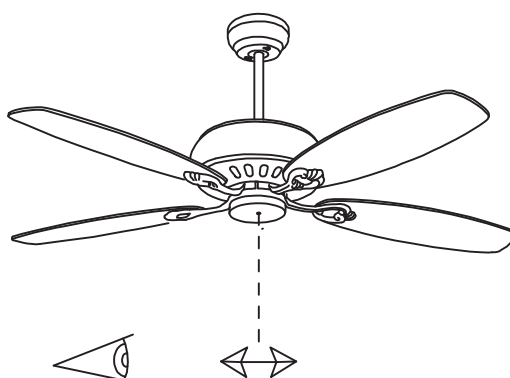


①		
②		
③		
④		
⑤		
⑥		
⑦		
⑧	STOP	
⑨		

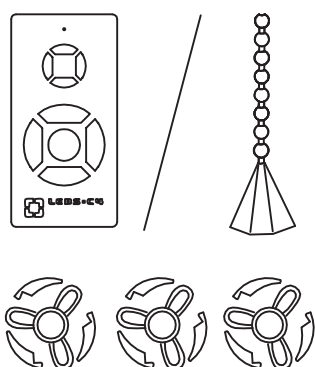




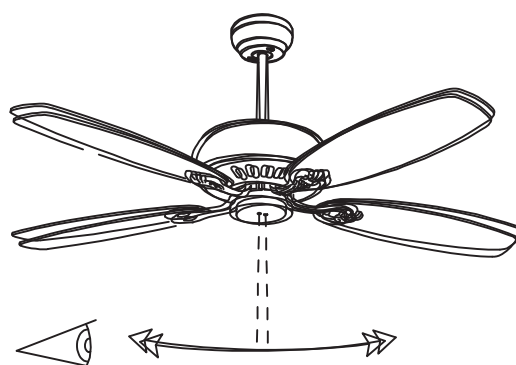
ON



= OK



ON



= NO

