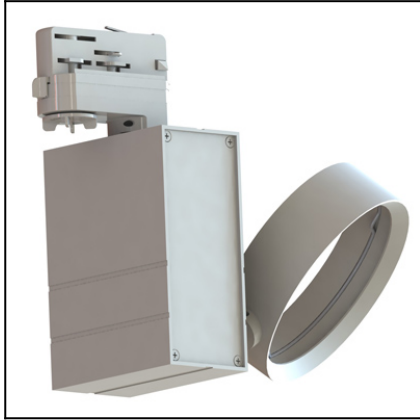


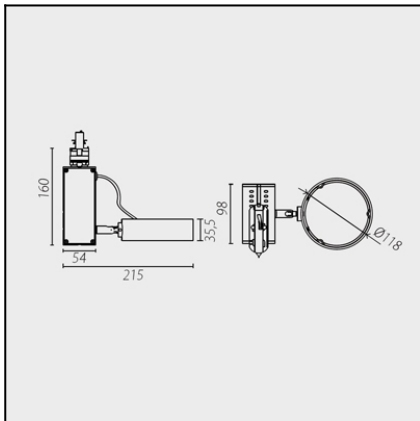


KEY

35-1558-14-00



The photograph may not match the reference exactly. Please read the product description to identify the finish.

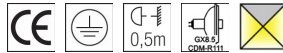


DESCRIPTION

Track mounted spotlight for halogen lamps, discharge lamps and 111mm diameter LED lights. Body made up of extruded aluminium and injected aluminium parts. Finish in white or black. Includes a tilting gimbal allowing multidirectional rotation and also rotation towards the unit. Surface installation possible with additional kit.

TECHNICAL CHARACTERISTICS

Type:	Spotlight
Adjustable 355° on the horizontal axis.	
Adjustable 355° on the vertical axis.2	
Adjustable from 0° to 60° on the horizontal axis.	
IP Protection degrees:	IP20
Lampholder:	1 x GX8.5
Power (W):	GX8.5 70
Voltage / Frequency:	220-240V/50-60Hz
Warranty (Years):	2
Units per box:	1
Net Weight (Kg):	0.845
EAN:	8,43511E+12



MATERIALS / FINISHES

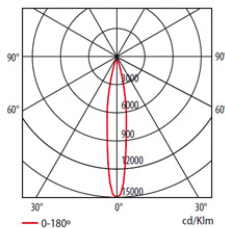
Structure material: Aluminium

Structure finish: White

GEAR

Gear included: Yes, electronic

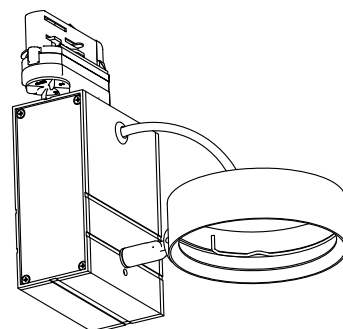
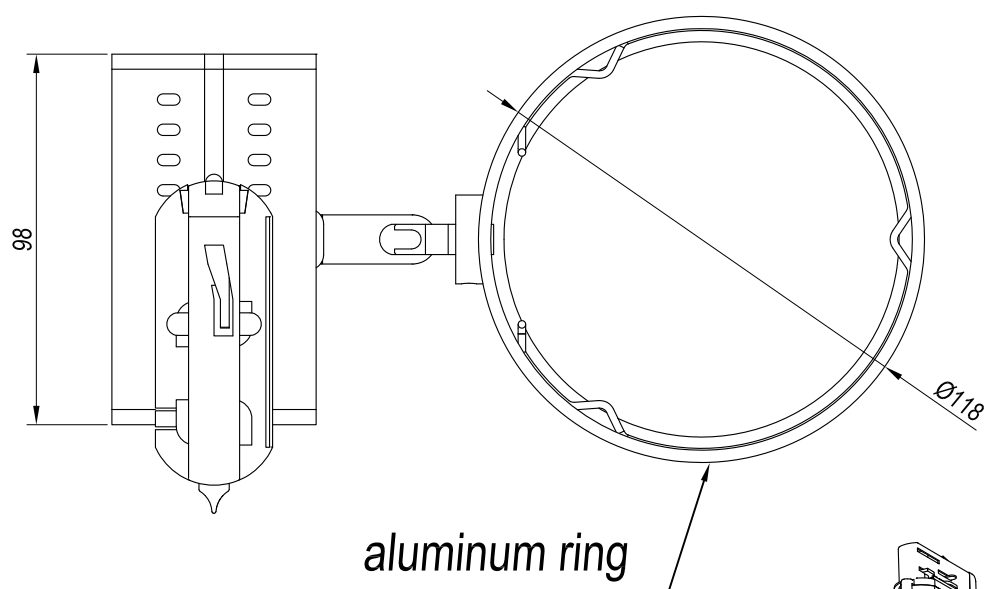
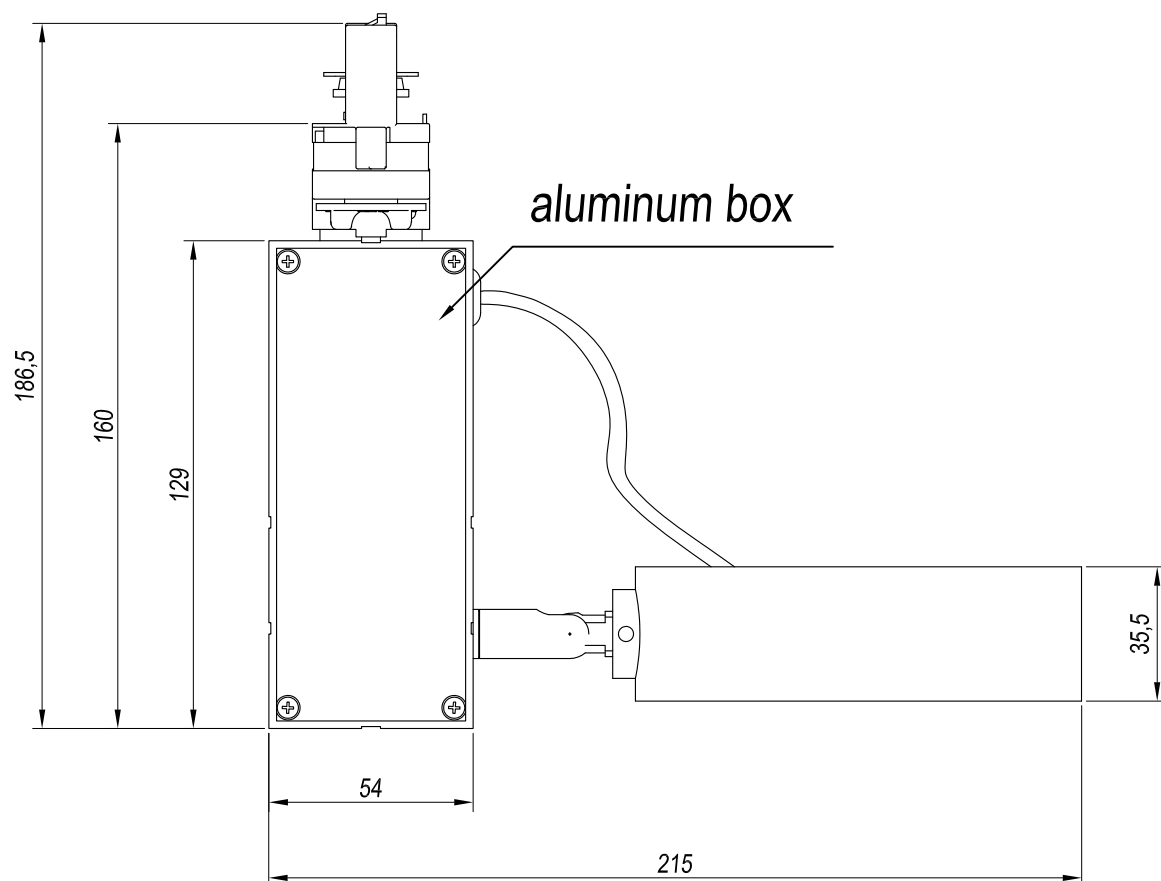
CDM-R111 GX8.5 70W 24°



$\eta=100\%$

H (m)	Emed (lux)	D (m)
1	29205.14	0.38
2	7301.29	0.75
3	3245.02	1.13
4	1825.32	1.51

Download photometric file .ldt /.ies



REF.	LAMP	SOCKET
35-1557-14/60-00	CDM-R111 35W	GX8.5
35-1558-14/60-00	CDM-R111 70W	GX8.5
35-1559-14/60-00	QR-111 MAX 100W/ AR-111 LED MAX 15W	G53
35-1565-14/60-00	AR-111 LED MAX 15W	GU10

