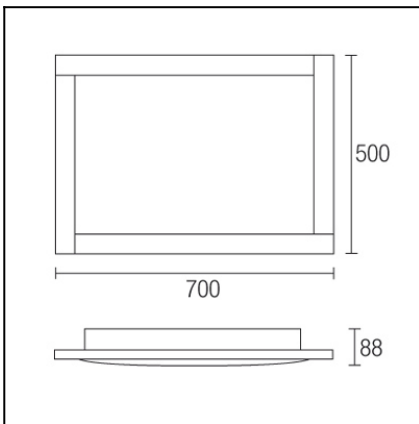




The photograph may not match the reference exactly. Please read the product description to identify the finish.



[Download photometric file .ldt /.ies](#)

## TECHNICAL CHARACTERISTICS

Type:	Ceiling fixture
IP Protection degrees:	IP23
Lampholder:	3 x 2G11
Power (W):	2G11 40W
Voltage / Frequency:	230V/50-60Hz
Units per box:	1
Net Weight (Kg):	7.34
EAN:	8435111051290



## MATERIALS / FINISHES

<b>Structure material:</b>	Aluminium	<b>Diffuser material:</b>	Polycarbonate
		<b>Diffuser finish:</b>	Matt opal

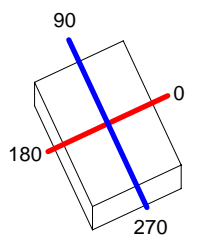
## GEAR

Gear included: Yes, electronic

<b>Luminaria</b>		<b>Ensayo</b>		<b>Lámpara</b>		
Código	495-AW	Código	495-AW	Código	PL-L55W/840/4P	
Nombre	Plafón 3x55W PL difusor opal	Nombre	Plafón 3x55W PL difusor opal	Número	3	
Familia	- LEDS-C4	Fecha	06-11-2012	Posición	Universal	
Rendimiento	30.98%	Sist. de Coordin.	C-G	Flujo Total	14400.00 lm	
Valor Máximo	1470.44 cd	Posición	C=0.00 G=0.00	Bisimétrico		
Luminaria Rectangular	Longit.	700 mm	Anchura	500 mm	Altura	90 mm
Área Luminosa Rectangular	Longit.	598 mm	Anchura	398 mm	Altura	35 mm
Área Luminosa Horizontal	0.238004 m <sup>2</sup>	Área Emisión sobre Pl. 180°		0.020930 m <sup>2</sup>		
Área Emisión sobre Pl. 0°	0.020930 m <sup>2</sup>	Área Emisión sobre Pl. 270°		0.013930 m <sup>2</sup>		
Área Emisión sobre Pl. 90°	0.013930 m <sup>2</sup>	Área de deslumbramiento a 76°		0.077887 m <sup>2</sup>		
Tipo de Simetría	Bisimétrico	Máximo Ángulo Gamma		180		
Distancia de Ensayo	6.44	Flujo de Ensayo		14400.00 lm		
Operador	Asselum T2	Tensión de alimentación		230.00 V		
Temperatura	20.00 °C	Corriente de alimentación		PRC		
Humedad	54.00 %	Fotocélula				
Notas						

Lámparas de la Luminaria					
Familia	Código	Nombre	Flujo/lm	Pot.W	Cant.
PHILIPS 2005 ILCOS FBT,G,C,FSQ	PL-L55W/840/4P	MASTER PL-L 55W/840/4P 2G11	4800.00	55.00	3
C.I.E.	46 77 94 98 31	D DIN 5040	A31		
F UTE	0.30 E + 0.01 T	B NBN	BZ 5		

700mm x 500mm



Semiplanos C

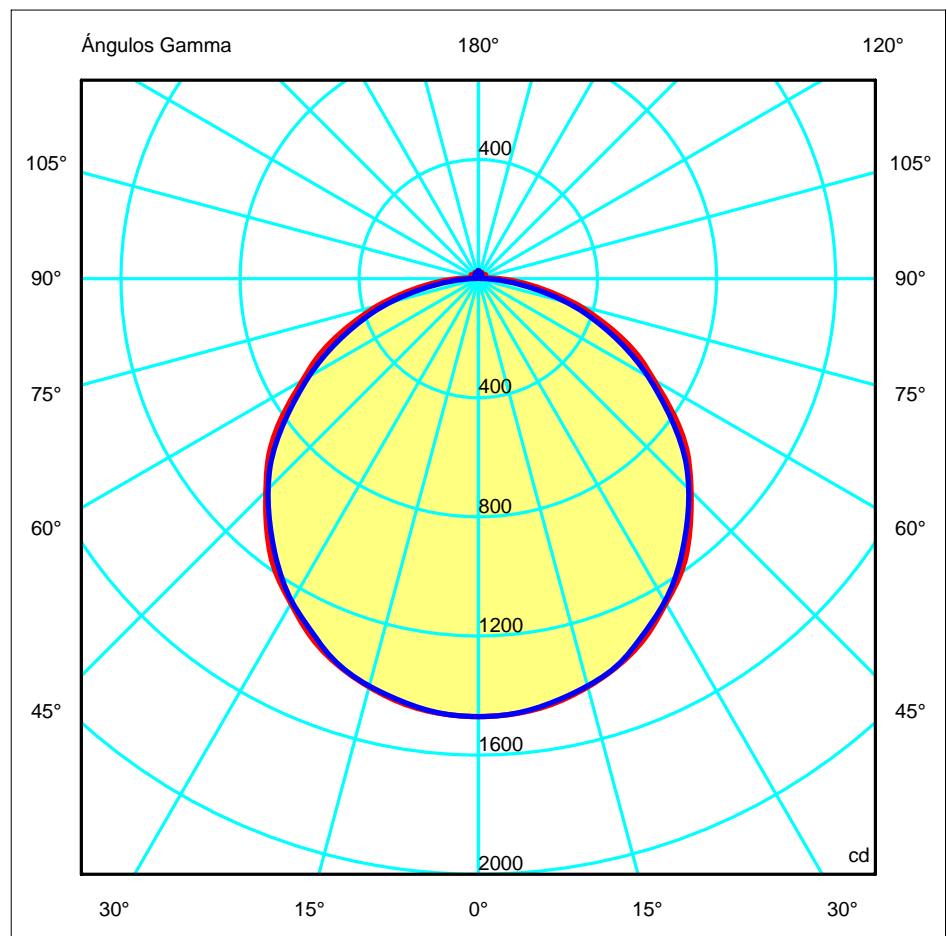
180.0 — 0.0

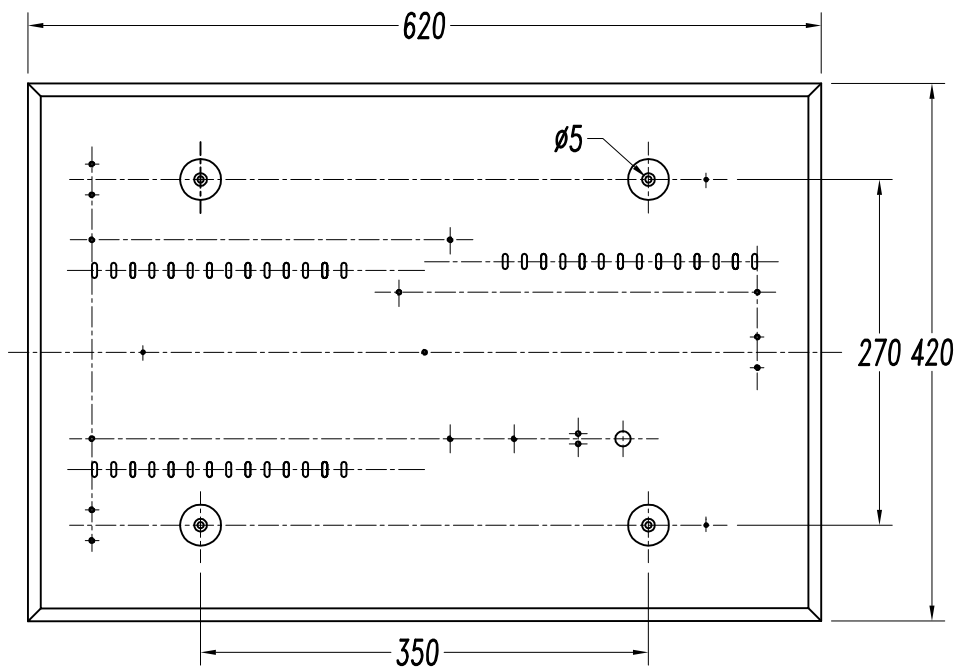
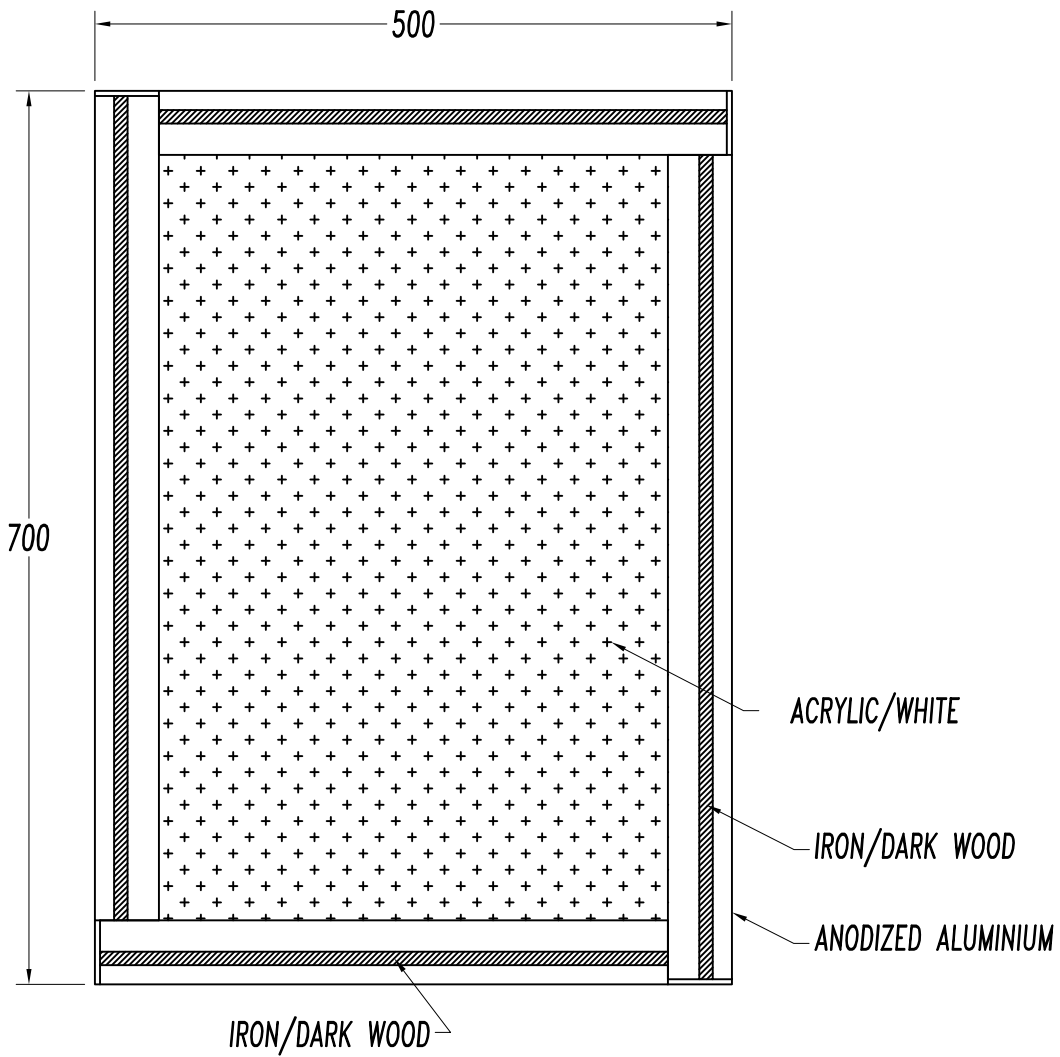
270.0 — 90.0

ULOR 0.73 %

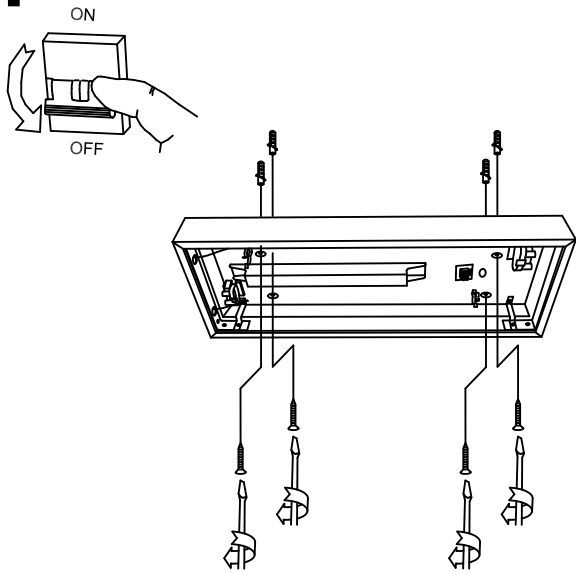
DLOR 30.25 %

RN 2.35 %

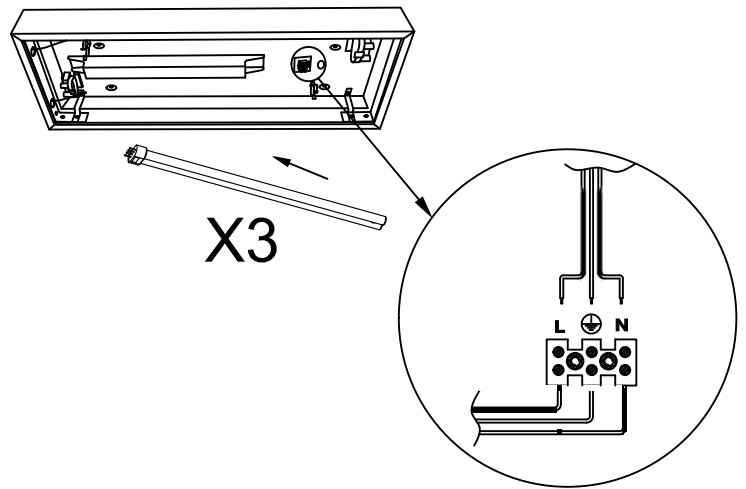




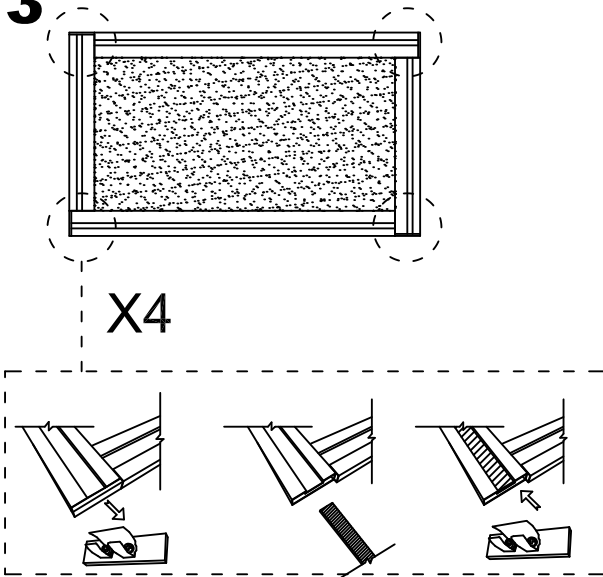
**1**



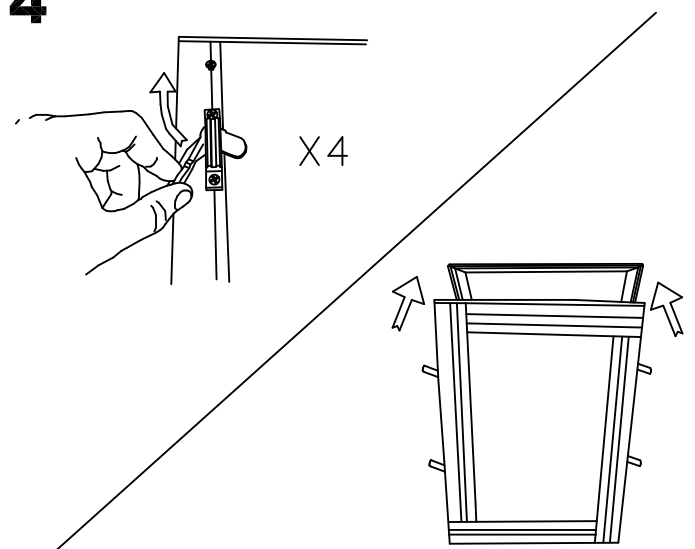
**2**



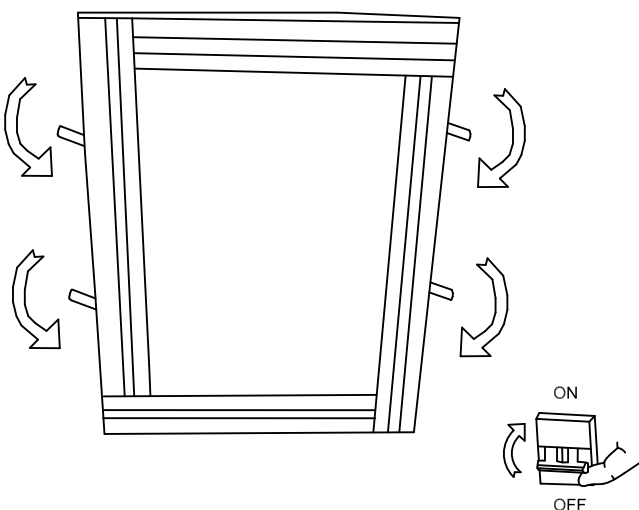
**3**



**4**



**5**



**6**

