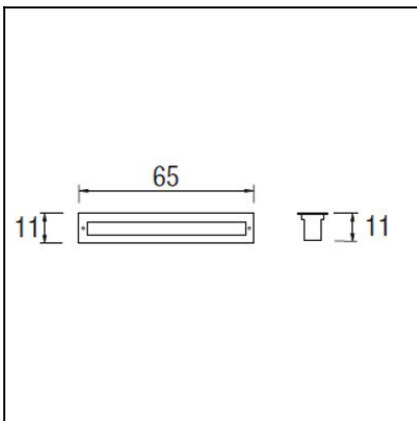




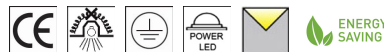
The photograph may not match the reference exactly. Please read the product description to identify the finish.


DESCRIPTION

May be flush mounted into the floor. Body produced in injected aluminium, with an AISI 304 stainless steel surround and a tempered glass UV protected diffuser. Rotatable (+/-15°) LED light source available in 4.100K LED and RGB LED. 100-240V driver included. Available in three sizes for three different wattages: 12W, 18W and 24W. Its wire outlets on both sides makes it suitable for an array installation. Includes flush mounting box. The RGB version includes a DMX controller.

TECHNICAL CHARACTERISTICS

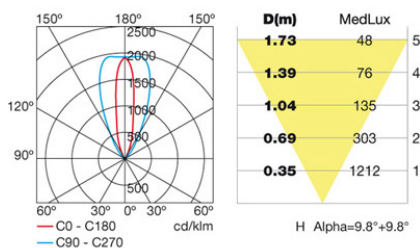
Type:	Uplight
Adjustable $\pm 15^\circ$ on the vertical axis	
IP Protection degrees:	IP67
IK Protection degrees:	IK08
Bulb:	12 x LED Philips. Neutral white (5000 - 3700 K)
Power (W):	1W
Voltage / Frequency:	100-240V/50-60Hz
Possibilitat extensió garantia:	Sí, 5 anys
Units per box:	2
Net Weight (Kg):	6.78
EAN:	8435111084663


MATERIALS / FINISHES

Structure material: Stainless steel
AISI304
Extruded aluminium

Diffuser material: Glass

Diffuser finish: Tempered


GEAR

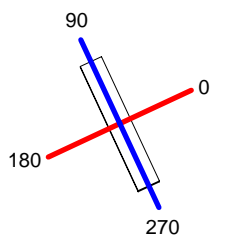
Multi-voltage electronic gear included (110-240 V / 50-60 Hz)

Download photometric file .ldt / .ies

Luminaria		Ensayo		Lámpara	
Código	55-9523	Código	55-9523	Código	55-9523
Nombre	Empotrable 12 leds 12W	Nombre	Empotrable 12 leds 12W	Número	1
Familia	- LEDS C4 LEDS	Fecha	16-11-2011	Posición	Universal
Rendimiento	100.00%	Sist. de Coordin.	C-G	Flujo Total	767.57 lm
Valor Máximo	1946.44 cd	Posición	C=90.00 G=10.00	Bisimétrico	
Flujo Rectangular	Longit. 645 mm	Anchura	110 mm	Altura	5 mm
Área Luminosa Rectangular	Longit. 565 mm	Anchura	50 mm	Altura	0 mm
Área Luminosa Horizontal	0.028250 m2	Área Emisión sobre Pl. 180°		0.000000 m2	
Área Emisión sobre Pl. 0°	0.000000 m2	Área Emisión sobre Pl. 270°		0.000000 m2	
Área Emisión sobre Pl. 90°	0.000000 m2	Área de deslumbramiento a 76°		0.006834 m2	
Tipo de Simetría	Bisimétrico	Máximo Ángulo Gamma	180		
Distancia de Ensayo	6.44	Flujo de Ensayo	767.57 lm		
Operador	Asselum T2	Tensión de alimentación	230.00 V		
Temperatura	22.00 °C	Corr. aliment.			
Humedad	50.00 %	Fotocélula	PRC		
Notas					

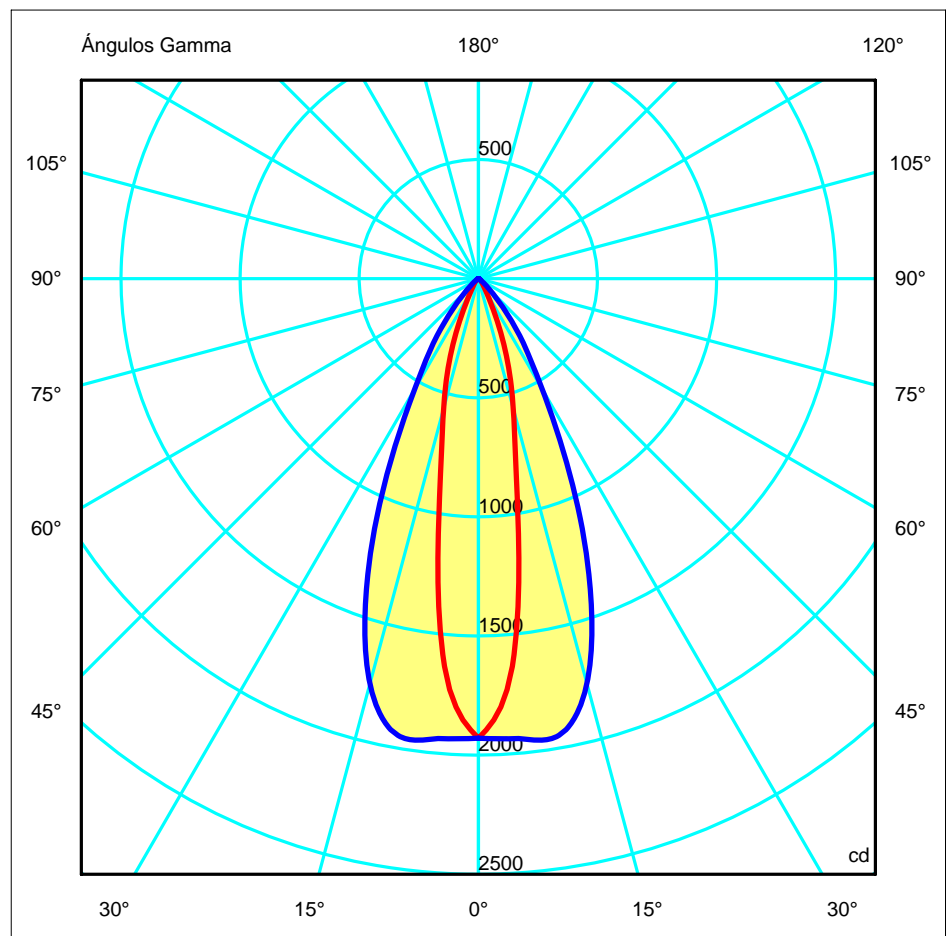
Lámparas de la Luminaria					
Familia	Código	Nombre	Flujo/lm	Pot.W	Cant.
- LEDS C4 LEDS	55-9523	Lámpara led blanco	767.57	20.00	1
C.I.E.	94 99 100 100 100	D DIN 5040	A60		
F UTE	1.00 A + 0.00 T	B NBN	BZ 1		

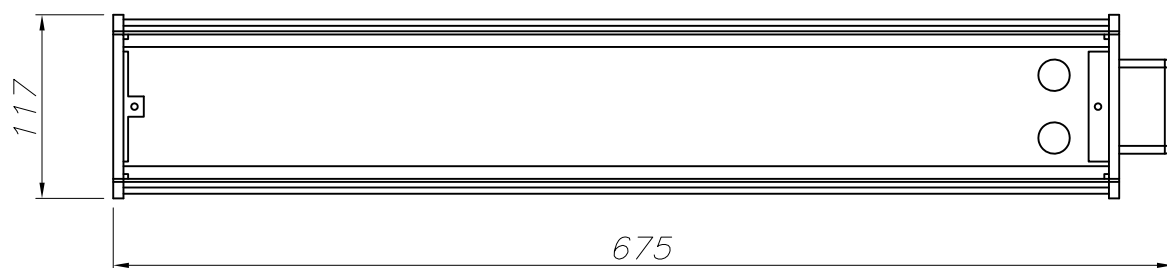
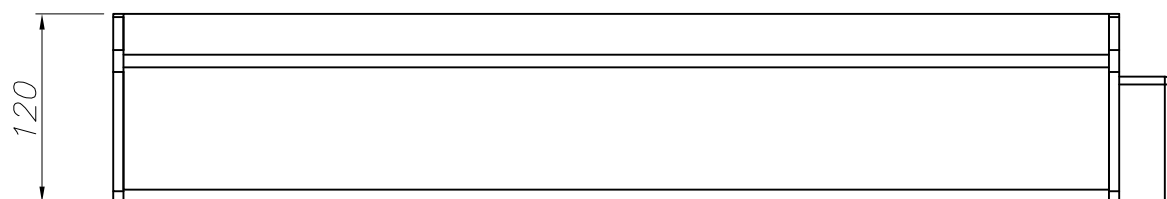
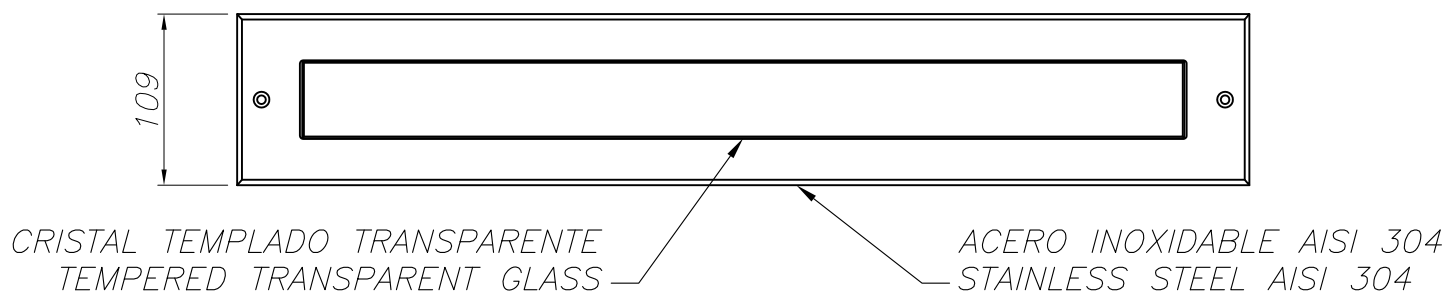
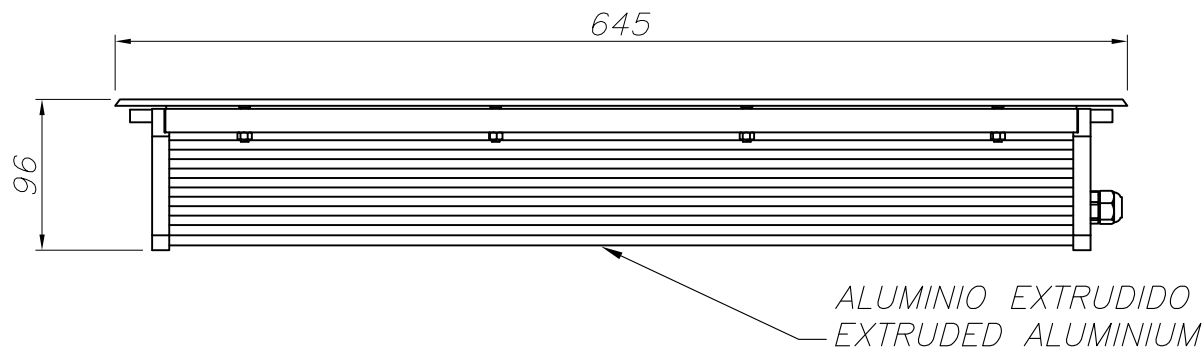
645mm x 110mm



Semiplanos C
 180.0 — 0.0
 270.0 — 90.0

ULOR 0.00 %
 DLOR 100.00 %
 RN 0.00 %





CAJA DE EMPOTRAR
FLUSH FITTING BOX

