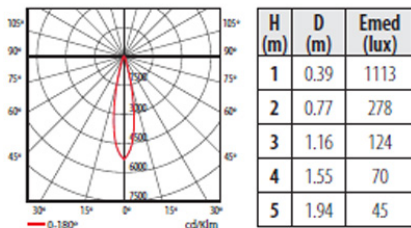
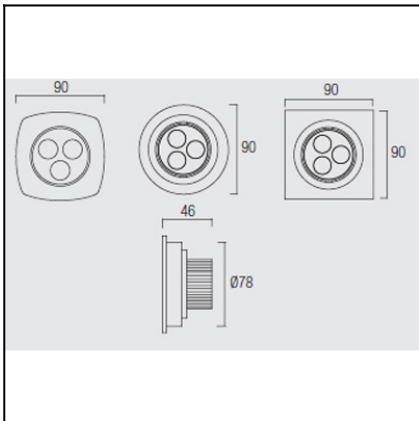


DELTA 3

90-3481-S2-N3



The photograph may not match the reference exactly. Please read the product description to identify the finish.

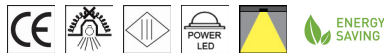


DESCRIPTION

Adjustable downlight comprising 3 LEDs for flush mounting. Aluminium body and tubular temperature disperser produced in machined high density aluminium. Available in warm white and lenses with 15° and 40° beam aperture. Option of combining body with different shape surrounds (oval, round and square) made of grey finish aluminium. Spring mounting system.

TECHNICAL CHARACTERISTICS

Type:	Downlight
Adjustable $\pm 20^\circ$ on the horizontal axis.	
IP Protection degrees:	IP23
Bulb:	3 x LED Cree. Warm White - 3000K
Power (W):	7
Total power consumption (W):	9
Luminous efficacy (Lm/W):	80,6
CRI:	80
Angle Optiques:	40°
Voltage / Frequency:	700mA
Warranty (Years):	3
Units per box:	1
Net Weight (Kg):	0.165
EAN:	8435111085868



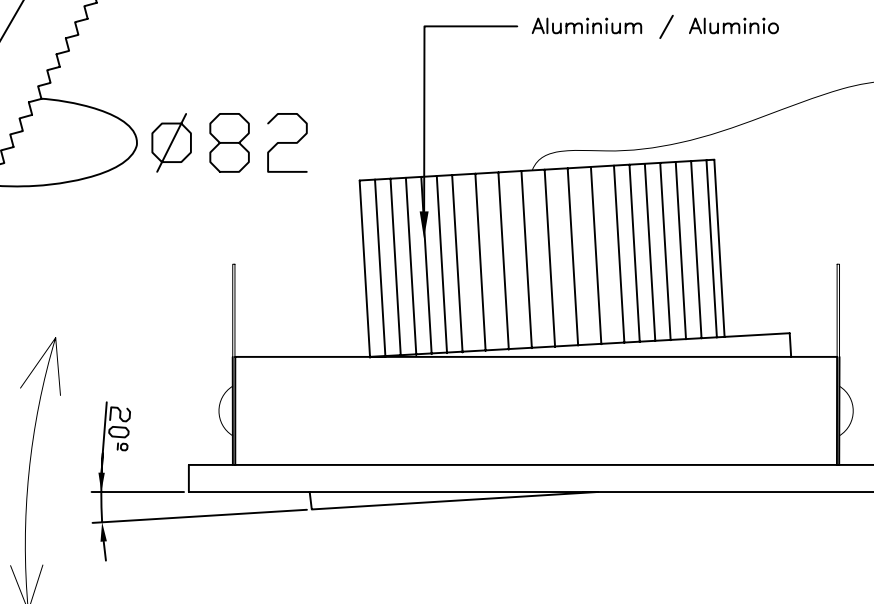
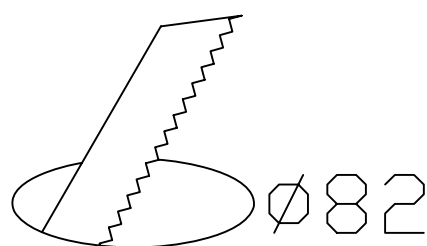
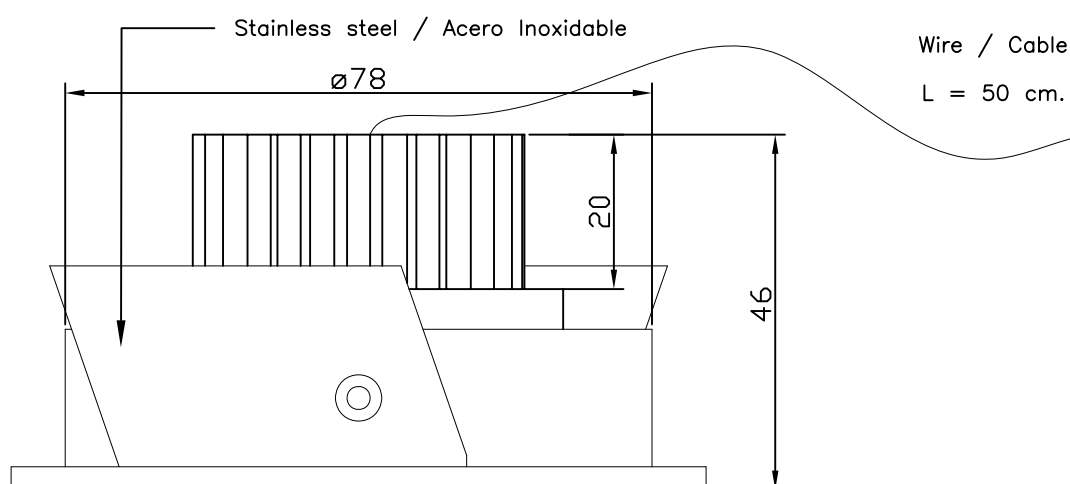
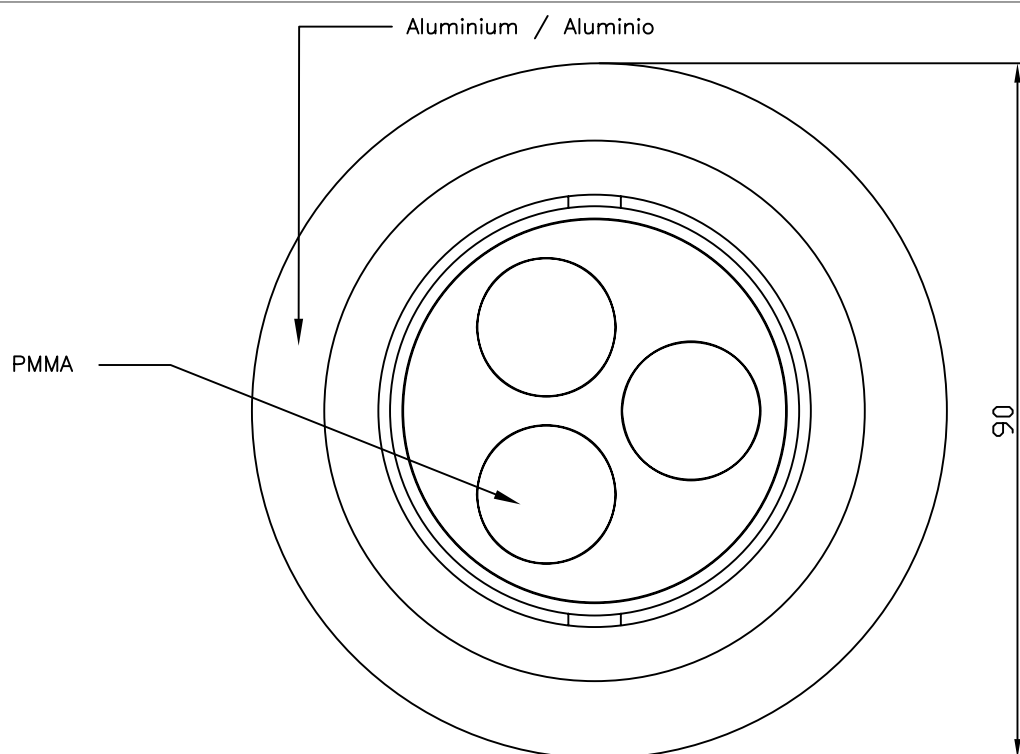
MATERIALS / FINISHES

Structure material:	Brushed aluminium Aluminium	Diffuser material:	Methacrylate
	Grey		

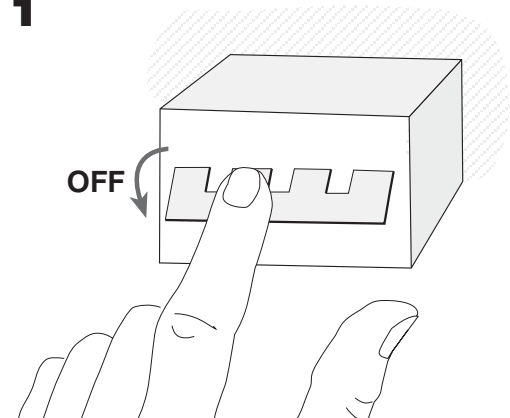
GEAR

Necessary equipment not included. For more information check website / catalogs / sales organization.

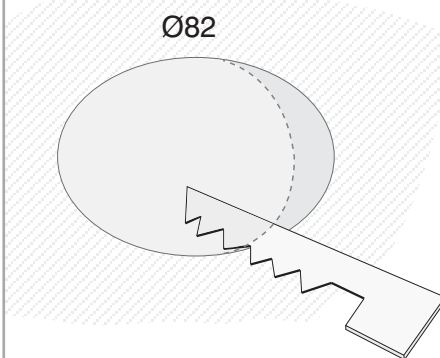
Download photometric file .ldt / .ies



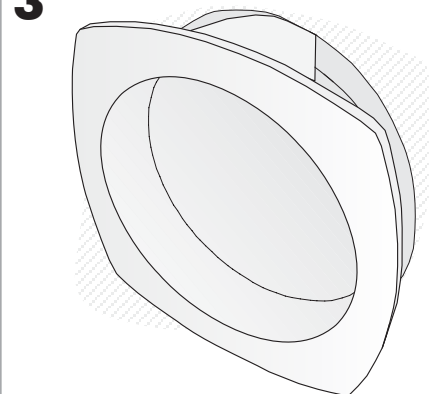
1



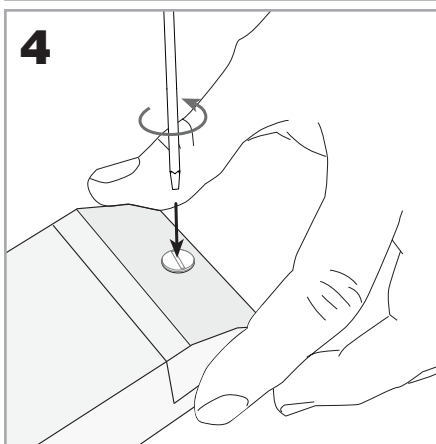
2



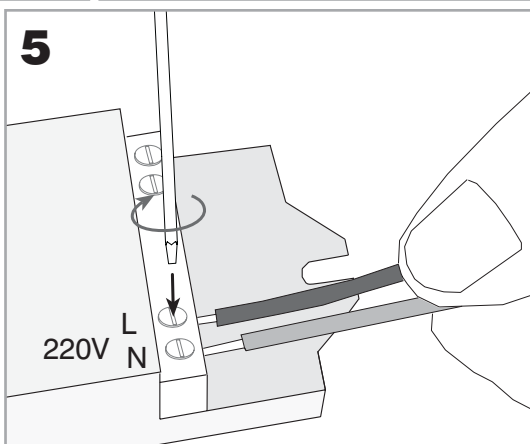
3



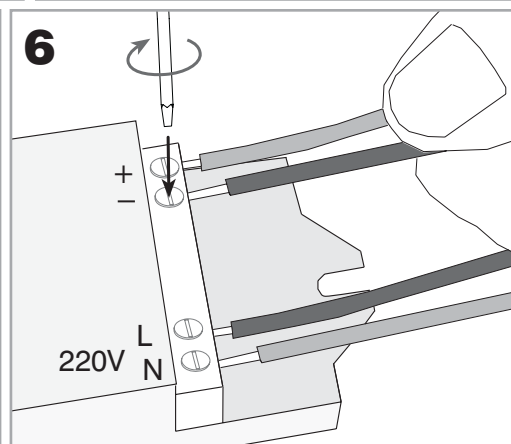
4



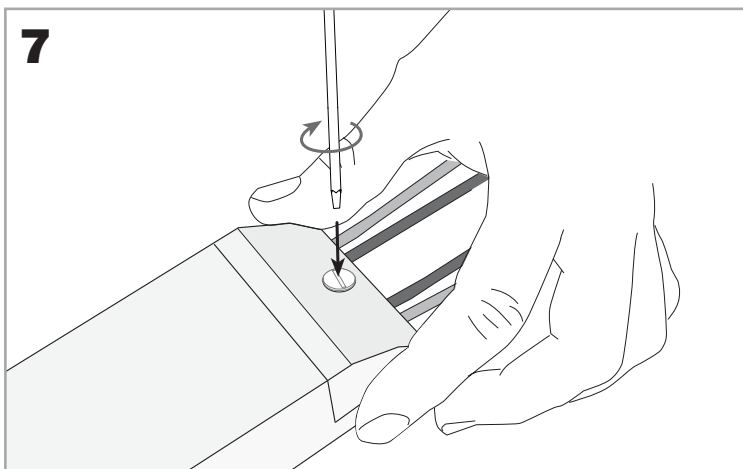
5



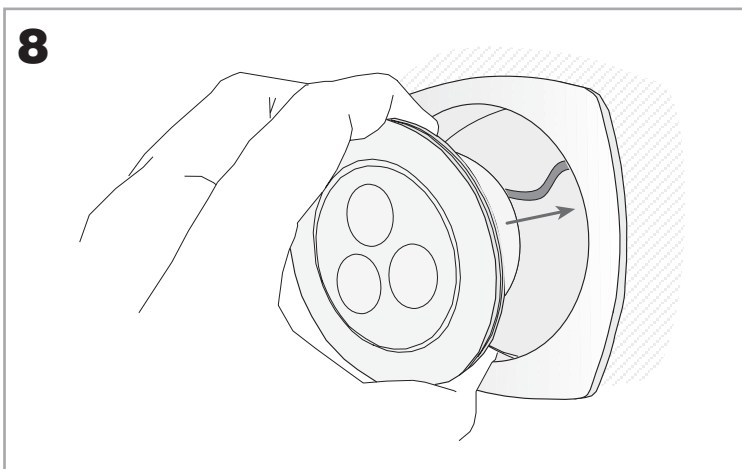
6



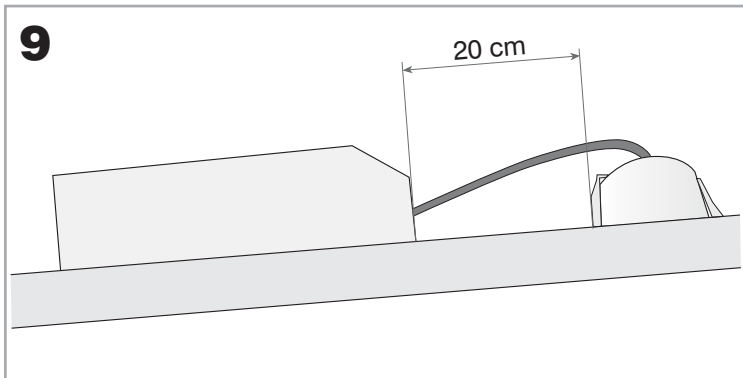
7



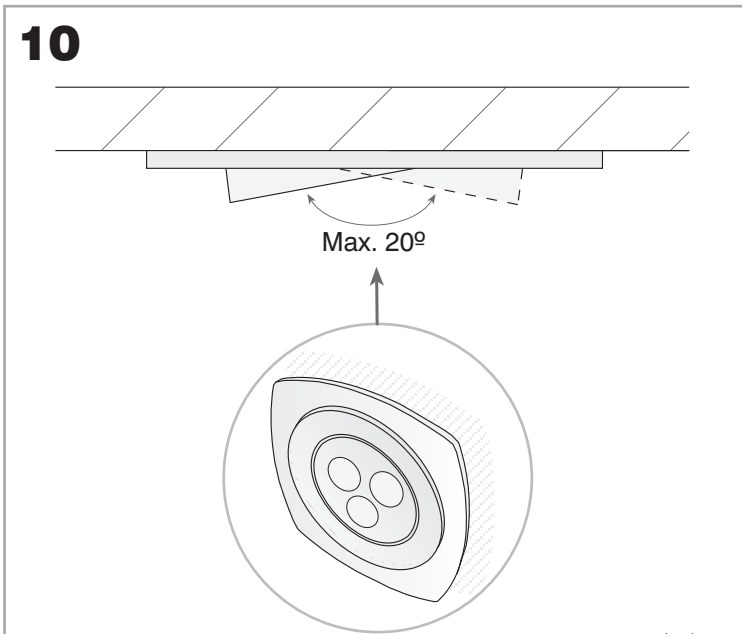
8



9



10



11

