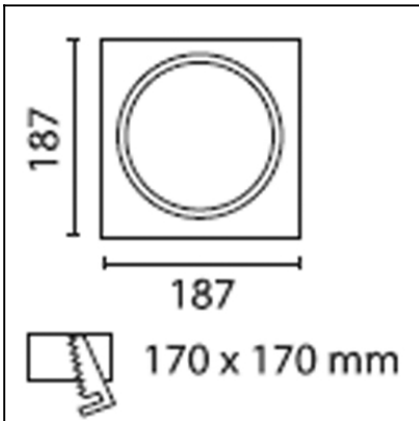


CARDEX E / C

ACT-0065-N3-00



The photograph may not match the reference exactly. Please read the product description to identify the finish.



DESCRIPTION

Mounting decorative plate

TECHNICAL CHARACTERISTICS

Type:	Accessory
Warranty (Years):	2
Units per box:	30
Net Weight (Kg):	0.145
EAN:	8435111041826,00

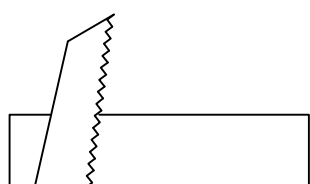
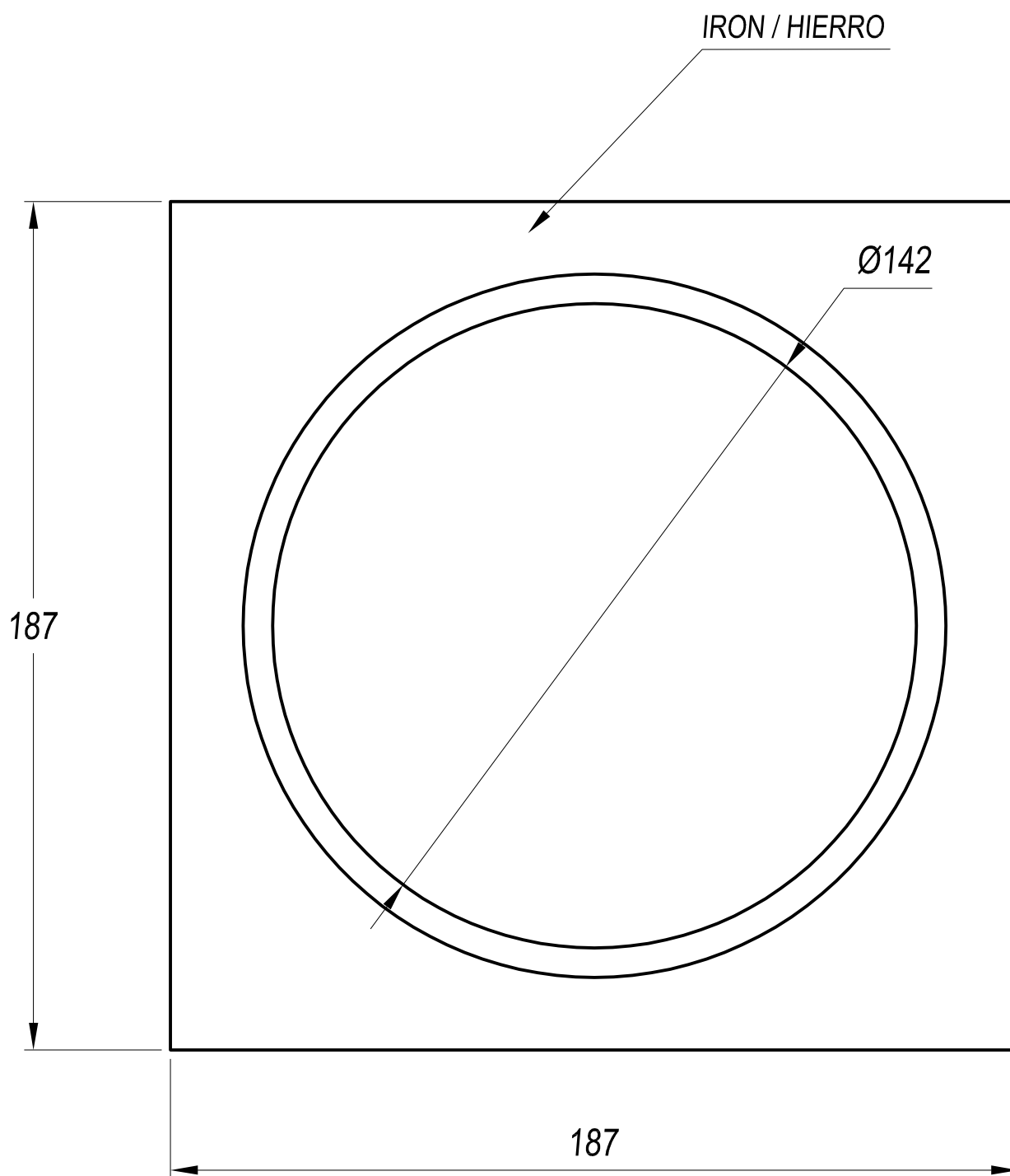


MATERIALS / FINISHES

Structure material: Steel

Structure finish: Grey

Download photometric file .ldt /.ies



170x170

NO

APLICA