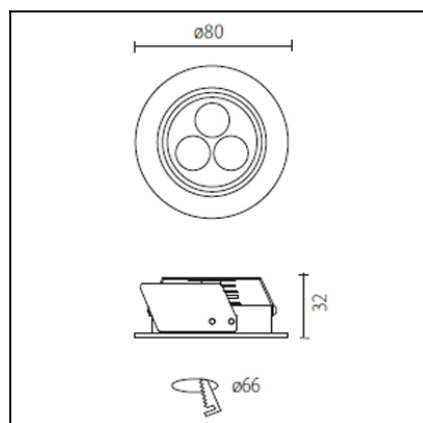
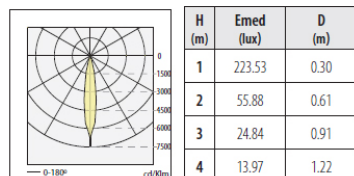




The photograph may not match the reference exactly. Please read the product description to identify the finish.



n° 49
LEDIO PowerLed 1W 15°
η= 95.000 %



DESCRIPTION

Multidirectional LED suitable for flush mounted installation on ceilings. Produced in machined high grade aluminium with a PMMA lens. Light beam of 15°. Two versions depending on fixture system and finish: - Grey finish with colour temperature available in warm white, with the light unit - Brushed aluminium finish with two colour temperature options (warm white and cool white), and subjection with two springs.

TECHNICAL CHARACTERISTICS

Type:	Downlight
Adjustable $\pm 15^\circ$ on the vertical axis	
IP Protection degrees:	IP23
Bulb:	3 x LED Cree. Warm White - 3000K
Power (W):	6,6
Total power consumption (W):	6.6
Angle Optiques:	15°
Voltage / Frequency:	700mA
Warranty (Years):	2
Option to extend the guarantee:	Yes, 5 years
Units per box:	100
Net Weight (Kg):	0.105
EAN:	8435111061084,00



MATERIALS / FINISHES

Structure material: Brushed aluminium
Structure finish: Baked-on grey paint

Diffuser material: Methacrylate
Diffuser finish: Transparent

GEAR

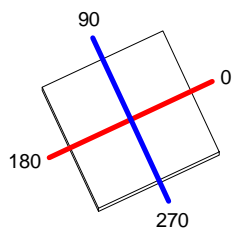
Necessary equipment not included. For more information check website / catalogs / sales organization.

Download photometric file .ldt /.ies

Luminaire			Measurem.			Lamp	
Code	DN-0512-N3-00		Code	DN-0512-N3-00 7C1-Q3		Code	LED
Name	LED RECESSED LIGHT		Name	LED RECESSED LIGHT		Number	3
Line	LED		Date	24-04-2013		Position	
Efficiency		96.22%	Coordinate system		CG	Total Flux	484.80 lm
Maximum value		2429.00 cd	Position		C=90.00 G=1.00	Asymmetrical	
Rectangular Luminaire		Length	42 mm	Width	42 mm	Height	1 mm
Rectangular Luminous Area		Length	42 mm	Width	42 mm	Height	0 mm
Horizontal Luminous Area		0.001764 m2	Emitting area on Plane 180°			0.000000 m2	
Emitting area on Plane 0°		0.000000 m2	Emitting area on Plane 270°			0.000000 m2	
Emitting area on Plane 90°		0.000000 m2	Glare area at 76°			0.000427 m2	
Symmetry Type		Asymmetrical	Maximum Gamma Angle			90	
Measurement Distance		0.00	Measurement Flux			484.80 lm	
Operator		25.00 °C			Source voltage		
Temperature		60.00 %			Source current		
Humidity					Photocell		
Notes							

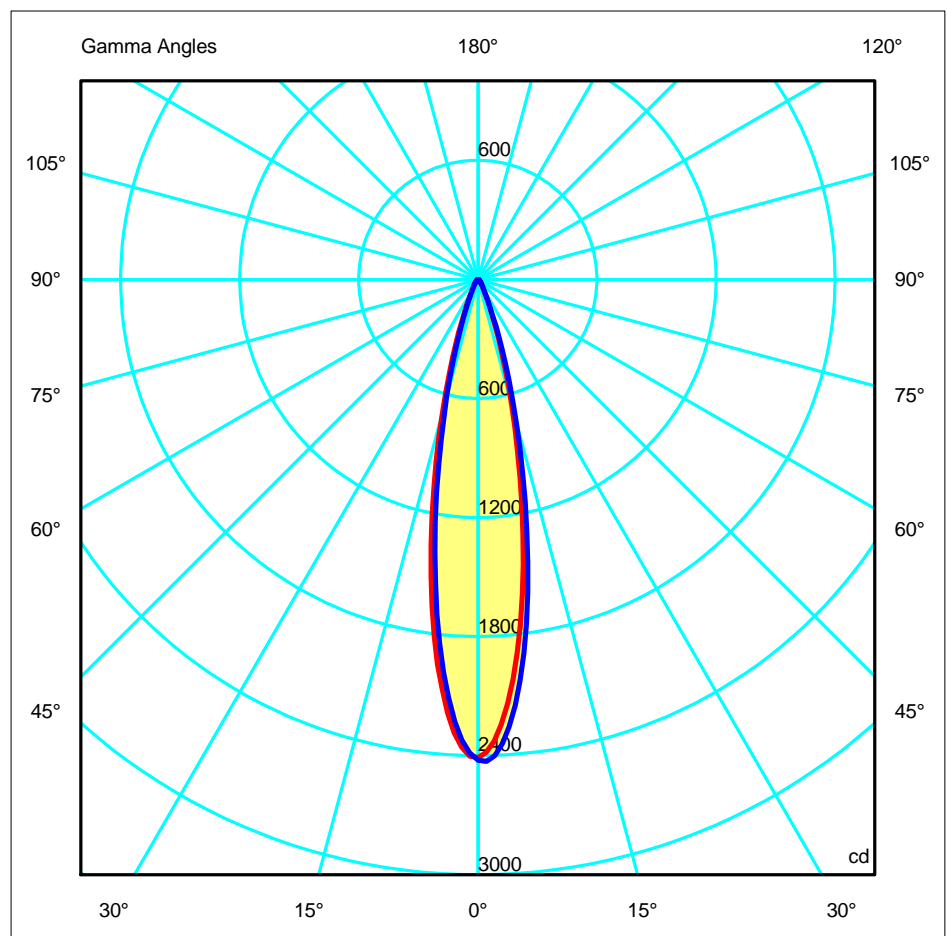
Luminaire Lamps					
Line	Code	Name	Flux [lm]	Pow. [W]	Q.ty
IESNA-1995	LED	XB-D/7C1-Q3 - 2.23 W	161.60	2.23	3
C.I.E.	94 98 99 100 96	D DIN 5040	A60		
F UTE	0.96 A	B NBN	BZ 1		

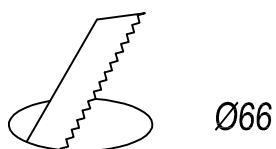
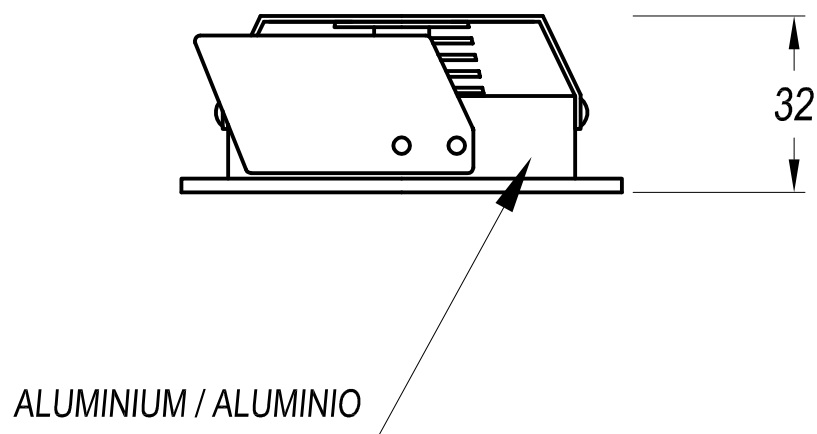
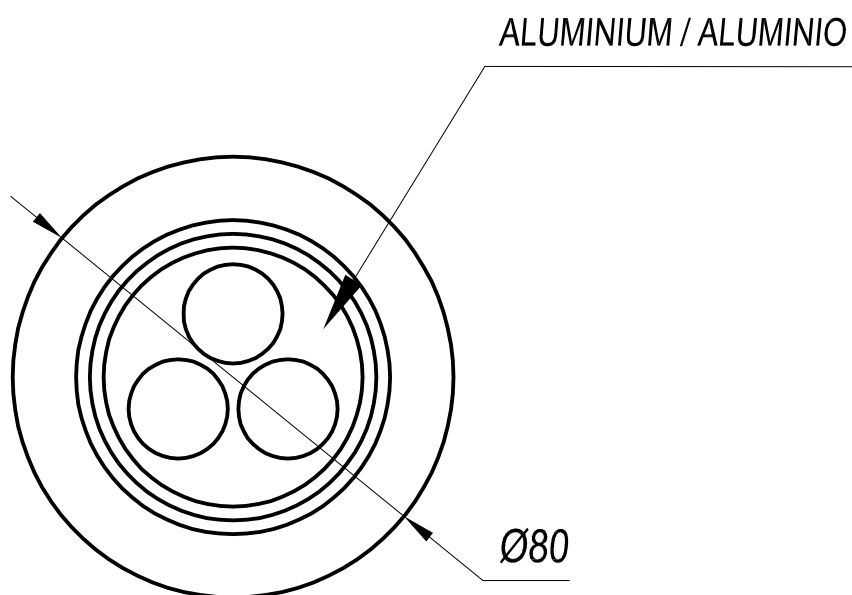
42mm x 42mm



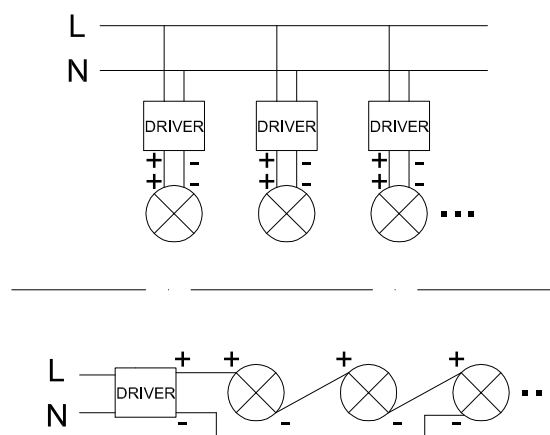
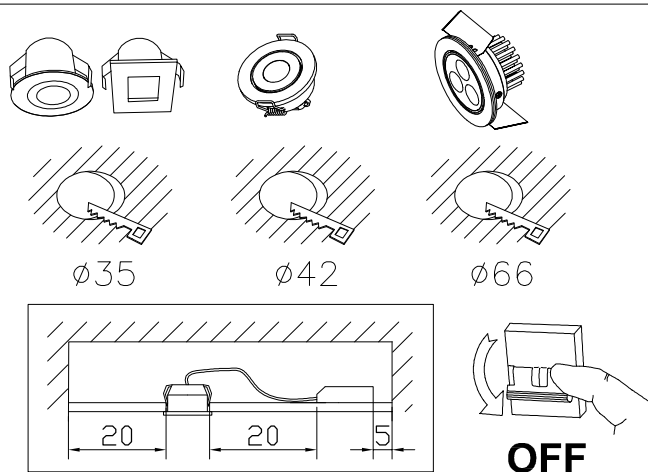
C Halfplanes
 180.0 — 0.0
 270.0 — 90.0

ULOR 0.00 %
 DLOR 96.22 %
 RN 0.00 %

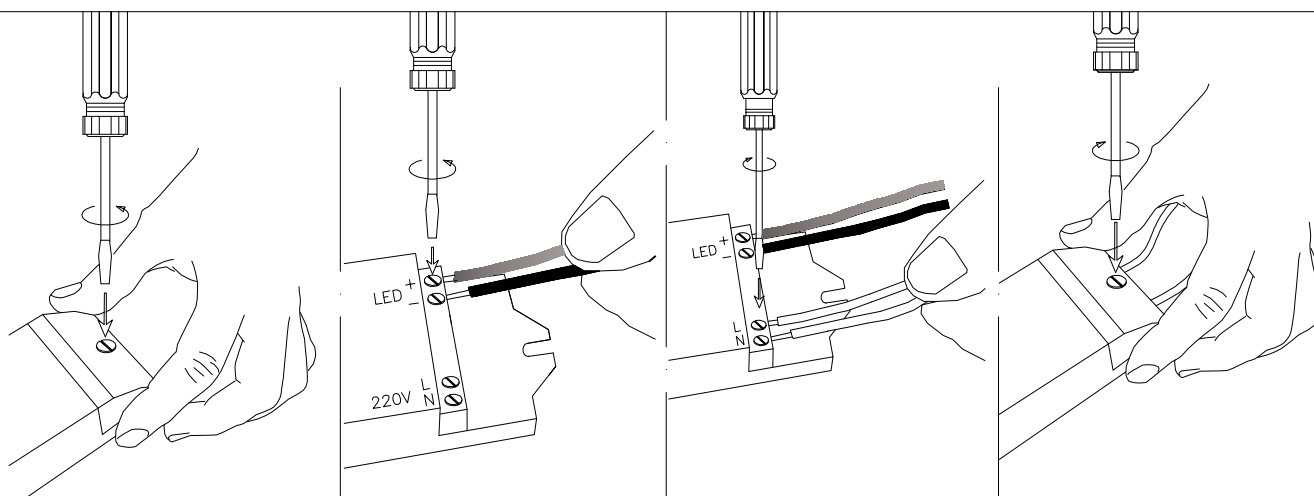




①



②



③



④

